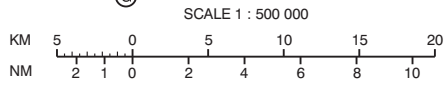
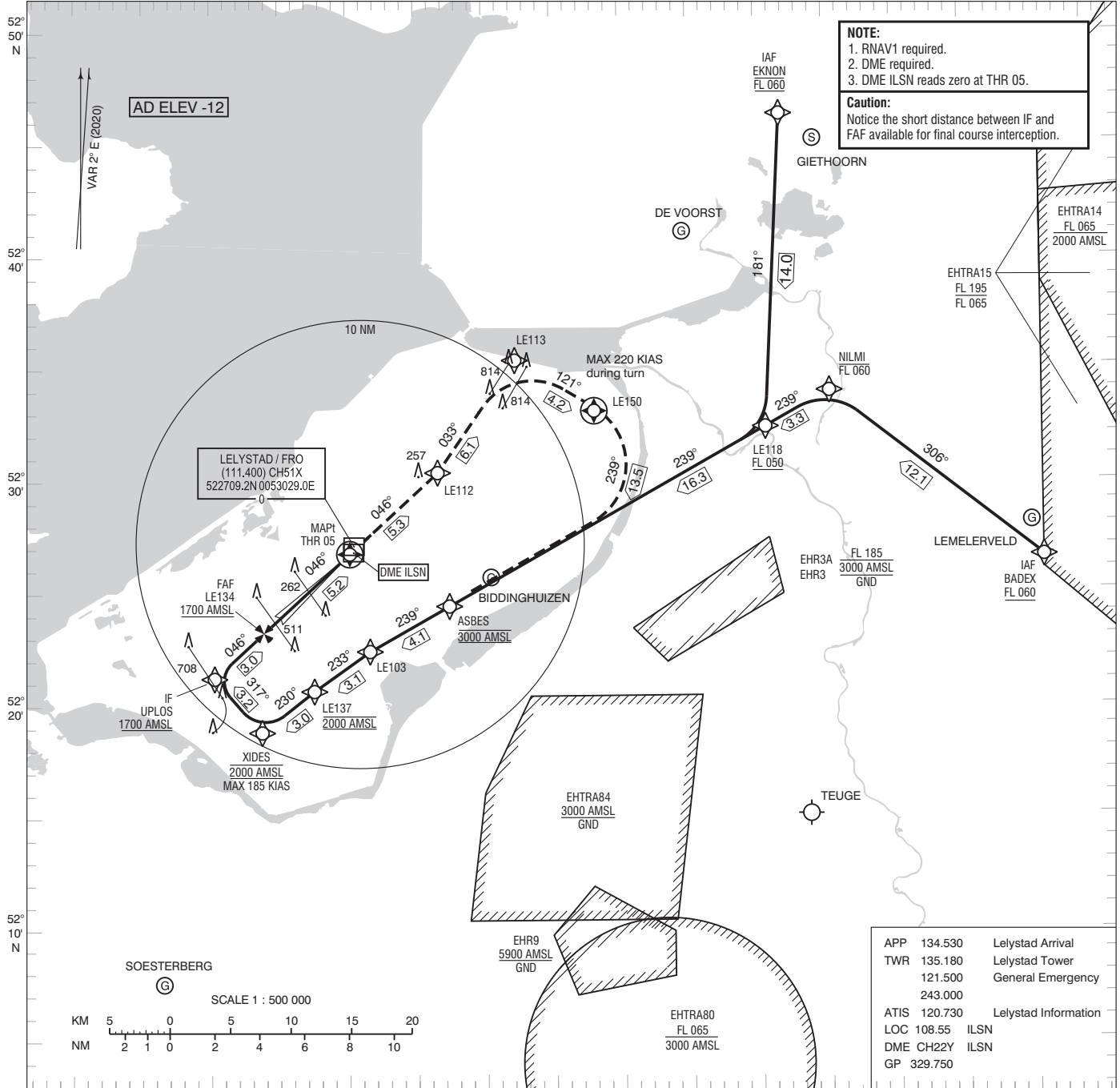


NOTE:
1. RNAV1 required.
2. DME required.
3. DME ILSN reads zero at THR 05.

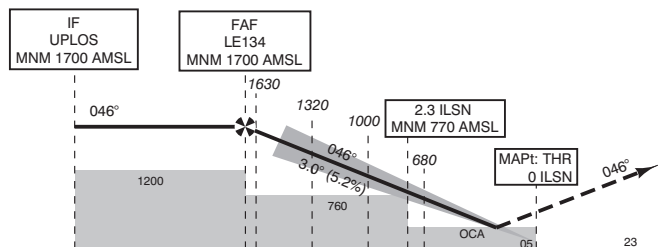
Caution:
Notice the short distance between IF and FAF available for final course interception.



APP	134.530	Lelystad Arrival
TWR	135.180	Lelystad Tower
	121.500	General Emergency
	243.000	
ATIS	120.730	Lelystad Information
LOC	108.55	ILSN
DME	CH22Y	ILSN
GP	329.750	

TRANSITION ALTITUDE 3000 FT AMSL

Missed approach:
- climb on course 046° MAG to LE112;
- to LE113, to LE150;
- course 239° MAG to ASBES, MAX 220 KIAS;
- climb to 3000 FT AMSL.



DIST RELATED TO DME ILSN	10	8.2	5.25	4	3	2.3	2	0NM	23	3
--------------------------	----	-----	------	---	---	-----	---	-----	----	---

GS IN KT	60	80	100	120	140	160	180
VERTICAL SPEED	320 FT/MIN	430 FT/MIN	540 FT/MIN	650 FT/MIN	760 FT/MIN	870 FT/MIN	980 FT/MIN

OCA (OCH) ELEV THR 05: -13 FT				MSA BASED ON ARP	
ACFT CAT	CAT I	LOC MAPt THR	CIRCLING	THR 05 522647.92N 0053010.10E	
A	156 (168)	350 (362)	NOT ALLOWED	LE103 522226.8N 0053137.0E	
B	168 (180)			LE112 523023.6N 0053636.6E	
C	178 (190)			LE113 523523.0N 0054217.8E	
D	189 (201)			LE118 523222.5N 0060036.3E	
				LE134 522316.7N 0052353.0E	
CEILING AND VISIBILITY MINIMA				DIRECTIONS ARE MAGNETIC DISTANCES IN NM ALTITUDES AND ELEVATIONS IN FEET	
TAKE-OFF	DAY:	NA	NIGHT:	NA	
LANDING	DAY:		NIGHT:		