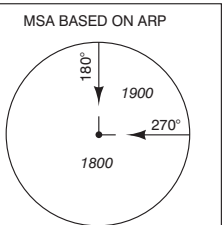
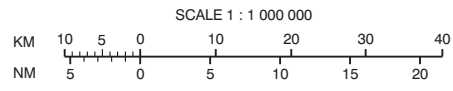
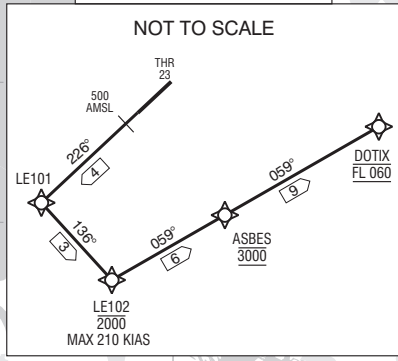


WARNING - STEPPED CLIMB
Due to interaction with other routes pilots must ensure strict compliance with the specified climb profile.



AVERAGE VAR 2°E (2020)
DISTANCES IN NM
ALTITUDES IN FEET
DIRECTIONS ARE MAGNETIC
23.1 SPY 304.2
DME SPY 23.1 NM
VOR SPY RADIAL 304.2

- SID
- ATS ROUTE
- - - STAR AS DESCRIBED
- - - VOR RADIAL
- - - BEARING

DTHR 23	522733.78N	0053132.16E
EH091	522522.2N	0042920.3E
LE101	522350.4N	0052453.1E
LE102	522123.3N	0052833.4E
LE107	523353.1N	0055012.7E
LE139	514615.6N	0043852.2E
LE141	524222.0N	0044652.4E
LE142	524044.0N	0043133.0E
LE145	515756.1N	0060401.0E
LE146	525028.5N	0053813.1E
LE147	525609.6N	0054118.4E
LE148	521938.0N	0060415.2E
LE149	521041.9N	0060428.5E

TWR	123.680	Lelystad Delivery
	135.180	Lelystad Tower
APP	134.530	Lelystad Arrival
ACC	128.355	Dutch MIL
	125.930	
	119.055	Schiphol Approach/Departure
	121.205	
	121.500	General Emergency
	243.000	
ATIS	120.730	Lelystad Information