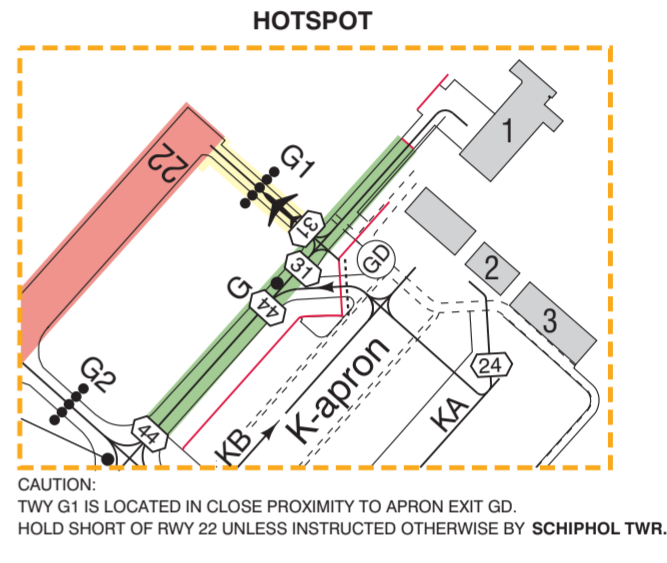
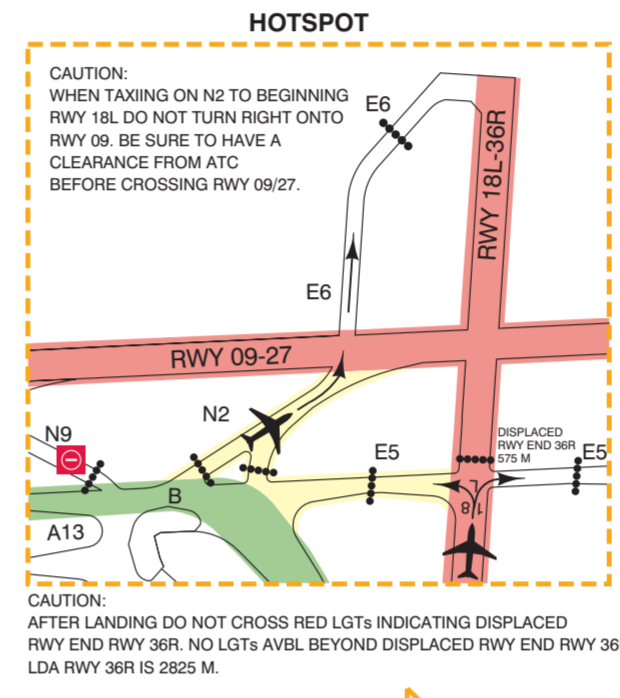
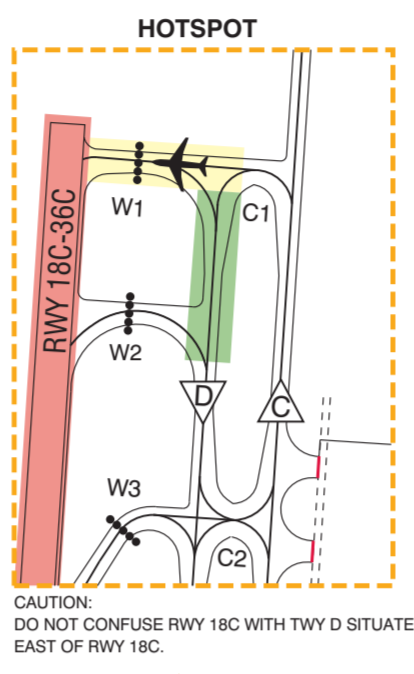
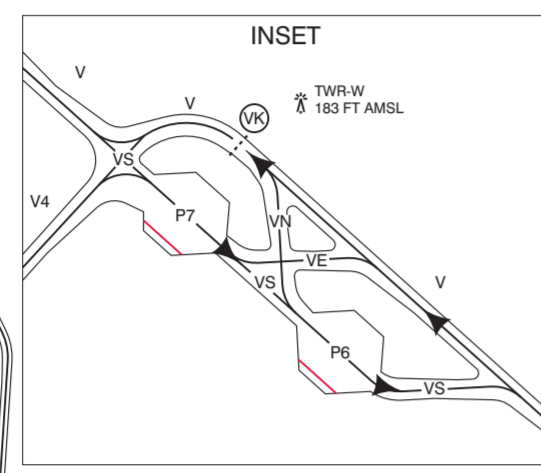
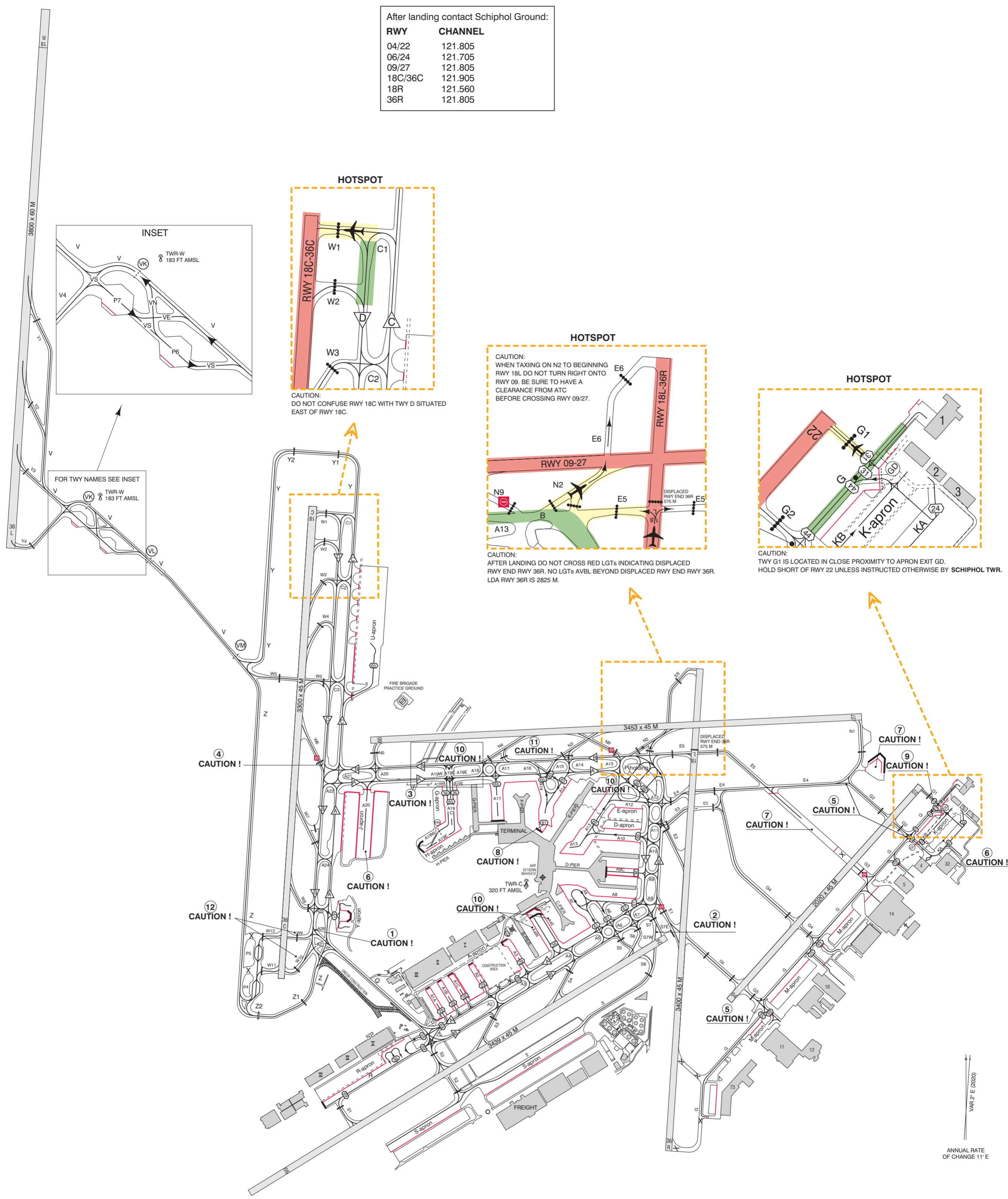


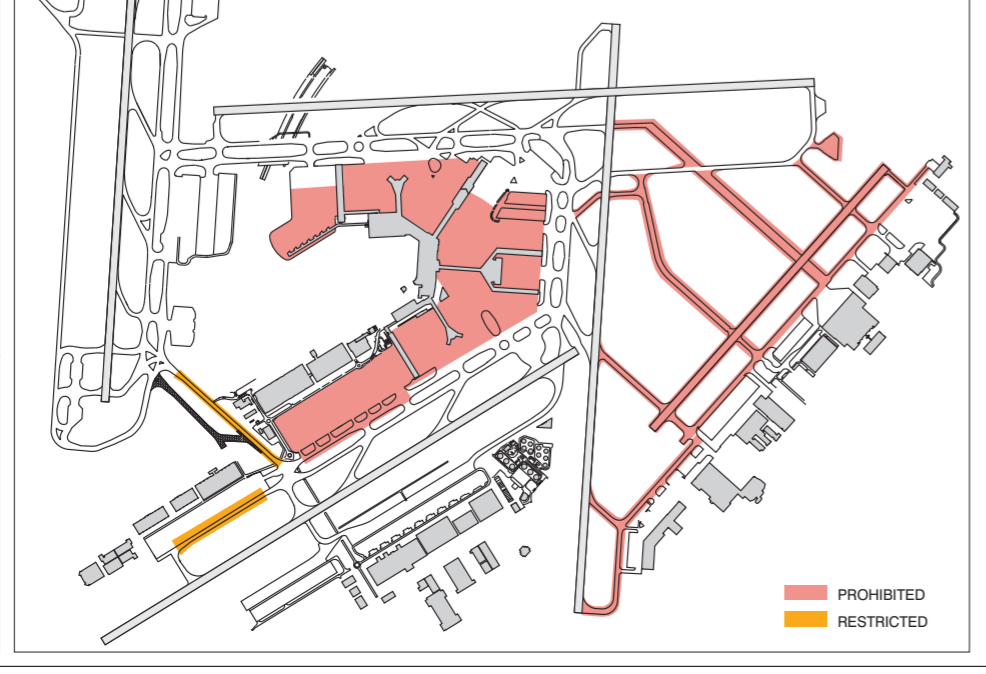
AD ELEV -11

After landing contact Schiphol Ground:

RWY	CHANNEL
04/22	121.805
06/24	121.705
09/27	121.805
18C/36C	121.905
18R	121.560
36R	121.805



Airbus A380 operational restrictions.
For details see AD 2.23 paragraph 7.
A380 taxi only with thrust on inner engines.



DIRECTIONS ARE MAGNETIC ELEVATIONS IN FEET AMSL DIMENSION IN METERS

CAUTION:

- Do not confuse RWY 36C with TWY B situated east of RWY 36C.
- TWY S7W designated for crossing RWY 06/24 only.
- Avoid holding on the upslope between A19 and A20 to prevent backward movement of the aircraft.
- RTF instruction inbound VIA NORTH: taxi via TWY A and Northside of airport. RTF instruction outbound VIA NORTH: taxi via TWY B and Northside of airport. RTF instruction inbound VIA SOUTH: taxi via TWY Q. RTF instruction outbound VIA SOUTH: taxi via TWY A and Q.
- Oversteering required for aircraft with wingspan >= 36 M.
- J-apron and K-apron is not controlled by ATC.
- Towing only.
- MAX wingspan 61 M only applicable to aircraft taxiing to E3.
- Vacating RWY 04 via TWY G1 is restricted to aircraft with a maximum wingspan of 31 M due to wingspan restriction on adjacent taxiways.
- Standard taxi routing, unless otherwise instructed by ATC, for ACFT docking at ACFT stands specified below:
 ACFT stands B15 - B35: TWY A4W.
 ACFT stands C6 - C14: TWY A4E.
 ACFT stand E24: aircraft with wingspan greater than 65 M: TWY A12.
 ACFT stands G3 - G9 and H1 - H7, aircraft with wingspan 36 M or less: from TWY A/B via TWY A19E (orange line).
 ACFT stands G71 - G79, aircraft with wingspan 36 M or less: from TWY A/B via TWY A19W (blue line).
 ACFT stands G3 - G9 and G73 - G79, aircraft with wingspan greater than 36 M: from TWY A/B via TWY A19C.
- When vacating RWY 27 N3 for TWY A, take the first left turn on N3 to cross TWY B.
- Taxiing from TWY W9 towards TWY A northbound is not possible. Taxiing from TWY W10 towards TWY A northbound is not possible.

SCALE 1 : 20 000

M 500 1000 2000
FT 1000 0 1000 2000

LEGEND

- No-entry: runway entry prohibited at this point. TWY E1 from TWY A, B and B. TWY G3 from TWY G. TWY N8 from TWY A and B. TWY W6 from TWY A, B and D.
- STOP BAR
- INTERMEDIATE HOLDING POSITION LIGHTED
- LIMITED ENTRY
- STANDARD TAXI ROUTING, UNLESS OTHERWISE INSTRUCTED BY ATC. ALL OTHER ROUTES MAY BE USED TWO-WAY ON ATC DISCRETION ONLY.
- ATC SERVICE BDY
- HANGAR NO. 12
- FREIGHT STATION NO. III
- SERVICE ROAD
- NOT IN USE

HOTSPOT

- RUNWAY
- ENTRY / EXIT
- TAXIWAY