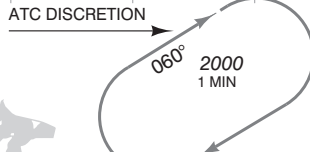


NOTES:
 1. Navigation in the initial and intermediate approach segment is primarily based on radar vectors provided by ATC.
 2. Execution of the complete procedure via SPL at ATC discretion or in case of COM failure.
 3. EGNOS CH 63580 E04A.
 4. Uncompensated LNAV/VNAV MNM TEMP: -15° C.
 5. LNAV APCH at ATC discretion only.
 6. In case of COM failure, the Amsterdam ACC Supervisor may be reached on telephone number +3120 406 3999.

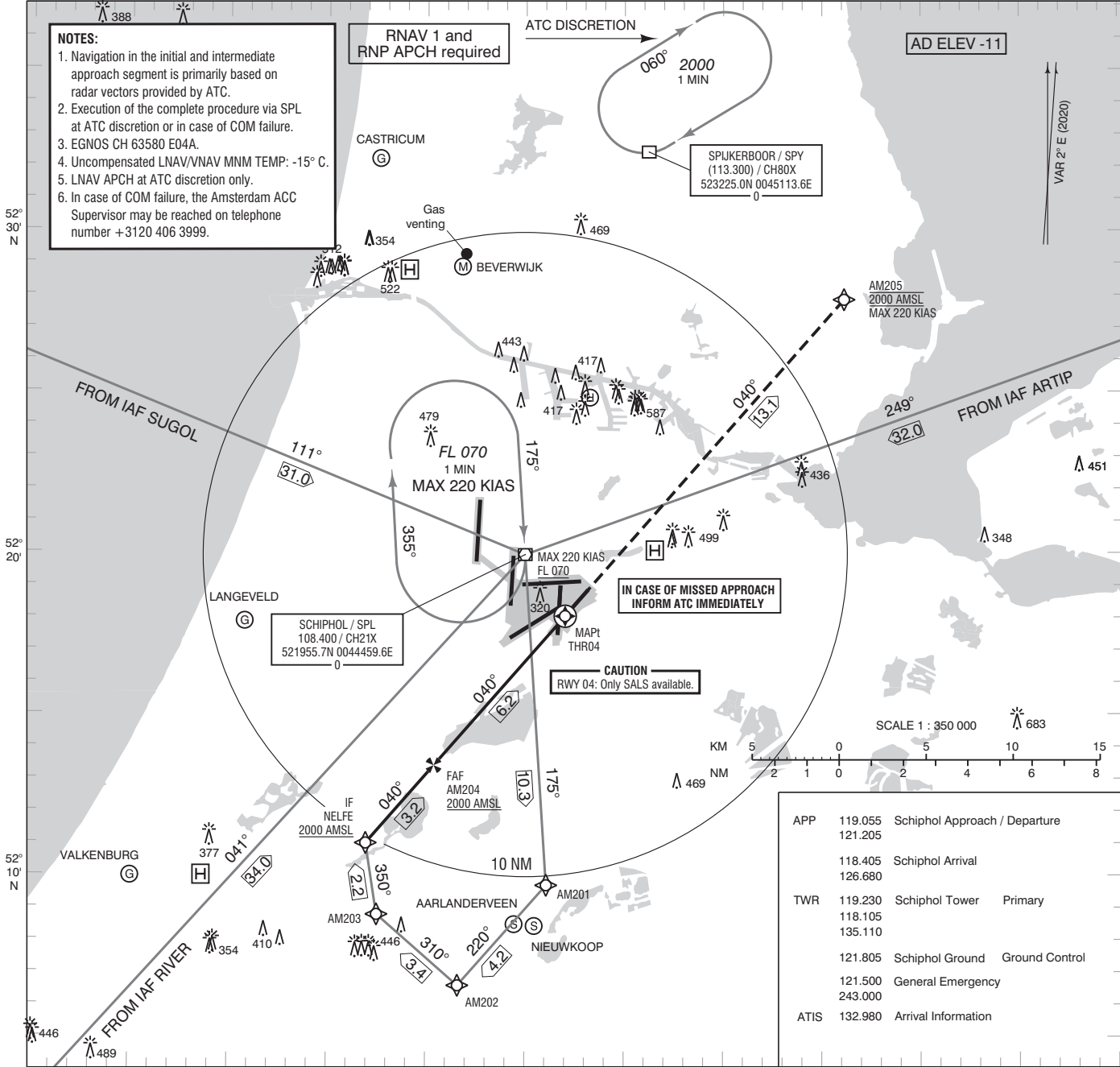
RNAV 1 and RNP APCH required



SPIJKERBOOR / SPY
(113.300) / CH80X
523225.0N 0045113.6E

AD ELEV -11

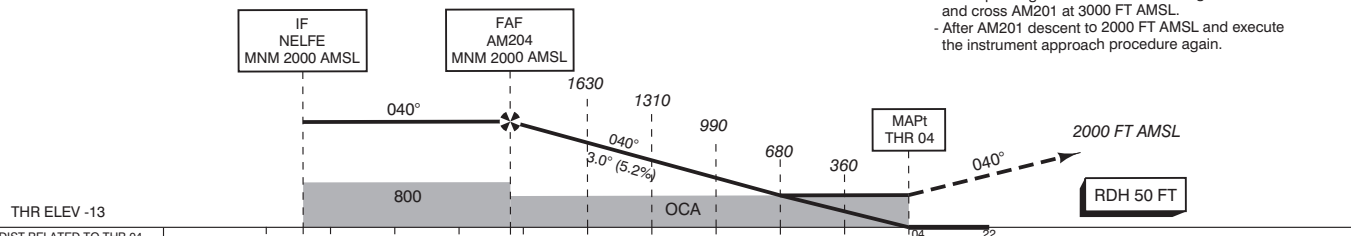
VAR 2° E (2020)



APP	119.055	Schiphol Approach / Departure
	121.205	
	118.405	Schiphol Arrival
	126.680	
TWR	119.230	Schiphol Tower Primary
	118.105	
	135.110	
	121.805	Schiphol Ground Ground Control
	121.500	General Emergency
	243.000	
ATIS	132.980	Arrival Information

TRANSITION LEVEL BY ATC
TRANSITION ALTITUDE 3000 FT AMSL

- Missed approach
- Inform ATC immediately
- Track 040° MAG to AM205 and climb to 2000 FT AMSL.
- Missed approach in case of communication failure:
- Track 040° MAG and climb to 3000 FT AMSL;
- When passing 2000 FT AMSL start a right turn to AM201 and cross AM201 at 3000 FT AMSL.
- After AM201 descent to 2000 FT AMSL and execute the instrument approach procedure again.



THR ELEV -13	10	9.4	6.2	5	4	3	2	1	0 NM	22
GS IN KT	60	80	100	120	140	160	180			
VERTICAL SPEED	320 FT/MIN	425 FT/MIN	530 FT/MIN	635 FT/MIN	745 FT/MIN	850 FT/MIN	955 FT/MIN			

OCA (OCH) ELEV THR 04: -13.1 FT					* Circling procedures to and landing on RWY 18L and 36L is not permitted, except in case of an emergency.	THR 04 521801.3N 0044700.5E AM201 520940.6N 0044604.9E AM202 520634.0N 0044137.1E AM203 520846.2N 0043731.6E AM204 521323.3N 0044023.7E AM205 522750.6N 0050107.8E	MSA BASED ON SPL VOR/DME
ACFT CAT	LPV	LNAV/VNAV	LNAV	CIRCLING*			
A	200 (213)	364 (377)	390 (401)	630 (641)			
B	211 (225)	376 (389)		790 (801)			
C	219 (233)	395 (409)		890 (901)			
D	230 (244)	423 (436)		900 (911)			

CEILING AND VISIBILITY MINIMA			DIRECTIONS ARE MAGNETIC DISTANCES IN NM ALTITUDES AND ELEVATIONS IN FEET AMSL
TAKE-OFF	DAY: NA	NIGHT: NA	
LANDING	DAY: 900 FT / 360 M	NIGHT: 900 FT / 360 M	