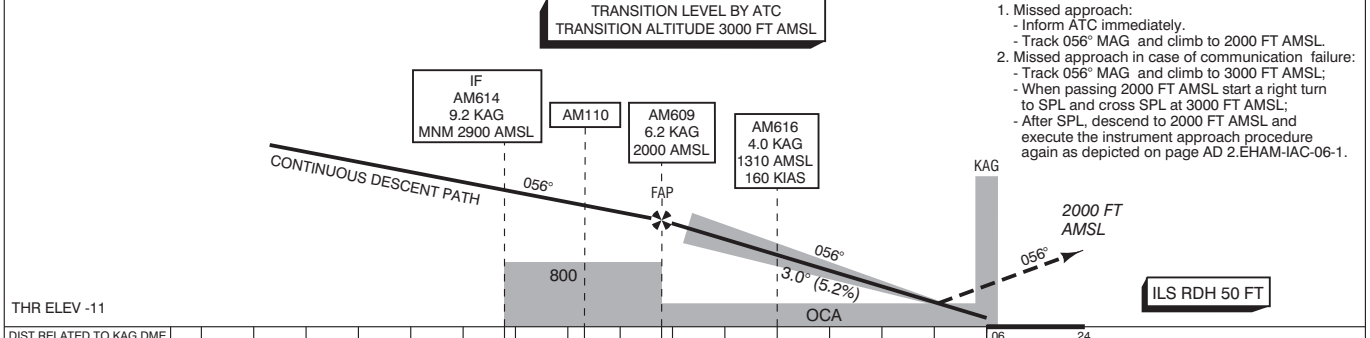
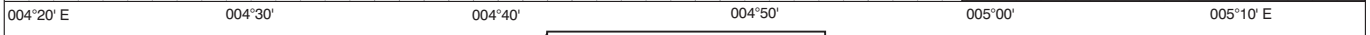


NOTES:

1. ILS must be available.
2. DME required.
3. DME KAG reads ZERO at THR 06.
4. Given AM waypoints beyond the FAP must be considered to be supplementary information.
5. In case of COM failure, the Amsterdam ACC Supervisor may be reached on telephone number +3120 406 3999.

APP	119.055	Schiphol Approach / Departure
	121.205	
	118.405	Schiphol Arrival
	126.680	
TWR	135.110	Schiphol Tower Primary
	119.230	
	118.105	
	121.705	Schiphol Ground Ground Control
	121.500	General Emergency
	243.000	
ATIS	132.980	Arrival Information
LOC	110.550	KAG
DME	CH42Y	KAG
GP	329.450	



1. Missed approach:
 - Inform ATC immediately.
 - Track 056° MAG and climb to 2000 FT AMSL.
2. Missed approach in case of communication failure:
 - Track 056° MAG and climb to 3000 FT AMSL;
 - When passing 2000 FT AMSL start a right turn to SPL and cross SPL at 3000 FT AMSL;
 - After SPL, descend to 2000 FT AMSL and execute the instrument approach procedure again as depicted on page AD 2.EHAM-IAC-06-1.

DIST RELATED TO KAG DME	15	10	9.2	7.7	6.2	5	4.0	0	06	24
GS IN KT		100	120	140	160	180	200	220		
VERTICAL SPEED		530 FT/MIN	635 FT/MIN	745 FT/MIN	850 FT/MIN	955 FT/MIN	1060 FT/MIN	1165 FT/MIN		

OCA (OCH) ELEV THR 06: -11.0 FT			
ACFT CAT	CAT III supported		CIRCLING*
	CAT I	CAT II	
A	128 (138)	(50)	630 (641)
B	138 (148)	(59)	790 (801)
C	148 (158)	(73)	890 (901)
D	161 (171)	(86)	900 (911)
DL	164 (174)	(86)	
CEILING AND VISIBILITY MINIMA			
TAKE-OFF	DAY:	NA	NIGHT: NA
LANDING	DAY:	NA	NIGHT: NA
* Circling procedures to and landing on RWY 18L and 36L is not permitted, except in case of an emergency.			
DIRECTIONS ARE MAGNETIC DISTANCES IN NM ALTITUDES AND ELEVATIONS IN FEET AMSL			
THR 06 521720.8N 0044414.0E AM110 521316.6N 0043340.8E AM609 521404.5N 0043544.7E AM613 521232.7N 0042745.2E AM614 521228.6N 0043137.1E AM616 521513.4N 0043843.3E			
MSA BASED ON SPL VOR/DME			

CHANGE: MNM Operating Network implementation; MAG VAR 2020; editorial.