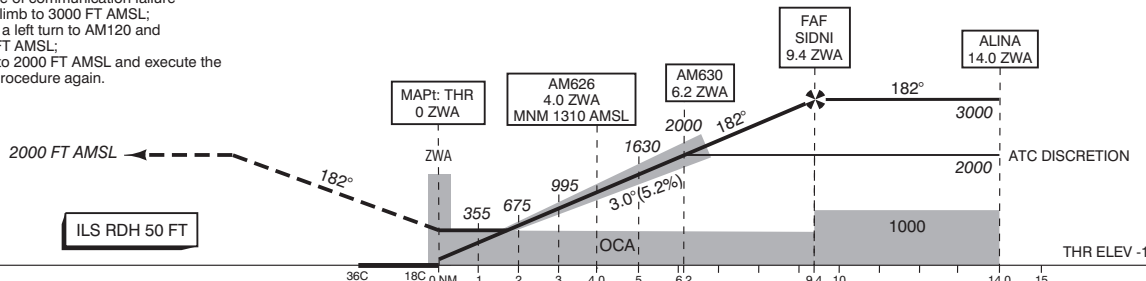


- Missed approach
 - Inform ATC immediately.
 - Track 182° MAG and climb to 2000 FT AMSL.
- Missed approach in case of communication failure
 - Track 182° MAG and climb to 3000 FT AMSL;
 - At 2000 FT AMSL start a left turn to AM120 and cross AM120 at 3000 FT AMSL;
 - After AM120 descend to 2000 FT AMSL and execute the instrument approach procedure again.

TRANSITION LEVEL BY ATC
TRANSITION ALTITUDE 3000 FT AMSL



DIST RELATED TO ZWA DME	36C	18C 0 NM	1	2	3	4.0	5	6.2	9.4	10	14.0	15
GS IN KT	100	120	140	160	180	200	220					
VERTICAL SPEED	530 FT/MIN	635 FT/MIN	745 FT/MIN	850 FT/MIN	955 FT/MIN	1060 FT/MIN	1165 FT/MIN					

OCA(OCH)/ELEV THR 18C: -12.0 FT											
ACFT CAT	CAT III supported		LOC MAPt: THR	CIRCLING*	THR 18C 521953.0N 0044424.1E	MSA BASED ON SPL VOR/DME					
	CAT I	CAT II									
A	133 (145)	(53)	690 (700)	630 (641)	AM120 522412.8N 0045252.3E						
B	139 (151)	(63)		790 (801)	AM121 523022.2N 0045328.6E						
C	149 (161)	(76)		890 (901)	AM122 523033.3N 0044811.9E						
D	162 (174)	(89)		900 (911)	AM626 522352.6N 0044445.3E						
DL	162 (174)	(92)			AM630 522601.7N 0044458.0E						
CEILING AND VISIBILITY MINIMA											
TAKE-OFF	DAY:	NA	NIGHT:	NA	* Circling procedures to and landing on RWY 18L and 36L is not permitted, except in case of an emergency. DIRECTIONS ARE MAGNETIC DISTANCES IN NM ALTITUDES AND ELEVATIONS IN FEET AMSL						
LANDING	DAY:		NIGHT:								