

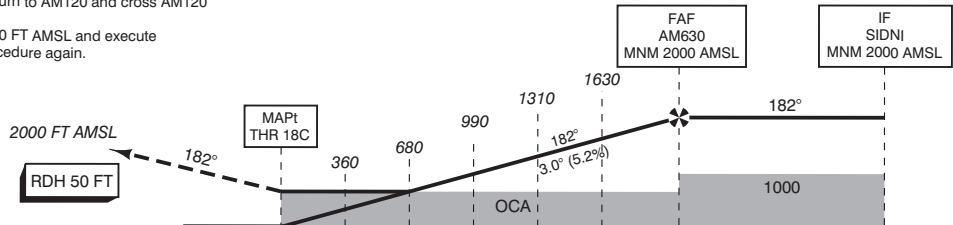
**NOTES:**

1. Navigation in the initial and intermediate approach segment is primarily based on radar vectors provided by ATC.
2. Execution of the complete procedure via SPL at ATC discretion or in case of COM failure.
3. EGNOS CH 64251 E18A.
4. Uncompensated LNAV/VNAV MNM TEMP: -15° C.
5. LNAV APCH at ATC discretion only.
6. When established on final approach maintain 160 KIAS until 4 NM before threshold.
7. In case of COM failure, the Amsterdam ACC Supervisor may be reached on telephone number +3120 406 3999.

APP	119.055	Schiphol Approach / Departure
	121.205	
	118.405	Schiphol Arrival
	126.680	
TWR	118.105	Schiphol Tower Primary
	135.110	
	119.230	
	121.905	Schiphol Ground Ground Control
	121.500	General Emergency
	132.980	
ATIS	243.000	Arrival Information

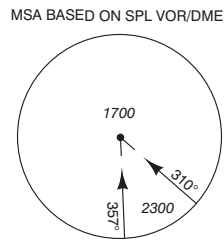
1. Missed approach
  - Inform ATC immediately
  - Track 182° MAG to AM123 and climb to 2000 FT AMSL.
2. Missed approach in case of communication failure:
  - Track 182° MAG and climb to 3000 FT AMSL;
  - At 2000 FT AMSL, start a left turn to AM120 and cross AM120 at 3000 FT AMSL;
  - After AM120, descend to 2000 FT AMSL and execute the instrument approach procedure again.

TRANSITION LEVEL BY ATC  
TRANSITION ALTITUDE 3000 FT AMSL



DIST RELATED TO THR 18C	36C	18C	0 NM	1	2	3	4	5	6.2	9.4	10	THR ELEV -12
GS IN KT	60	80	100	120	140	160	180					
VERTICAL SPEED	320 FT/MIN	425 FT/MIN	530 FT/MIN	635 FT/MIN	745 FT/MIN	850 FT/MIN	955 FT/MIN					
OCA (OCH) ELEV THR 18C: -12.0 FT												

ACFT CAT	LPV	LNAV/VNAV MNM TEMP -15°C	LNAV	CIRCLING*		THR 18C		
A	201 (213)	242 (254)		630 (641)		521953.0N	0044424.1E	
B	213 (225)	248 (260)		790 (801)		522412.8N	0045252.3E	
C	221 (233)	267 (279)	670 (681)	890 (901)		523022.2N	0045328.6E	
D	232 (244)	293 (305)		900 (911)		523033.3N	0044811.9E	
DL						520641.5N	0044312.4E	
						522601.7N	0044458.0E	



CEILING AND VISIBILITY MINIMA			
TAKE-OFF	DAY:	NA	NIGHT:
LANDING	DAY:	NA	NIGHT:

DIRECTIONS ARE MAGNETIC  
DISTANCES IN NM  
ALTITUDES AND ELEVATIONS  
IN FEET AMSL

CHANGE: MNM Operating Network implementation; MAG VAR 2020; editorial.