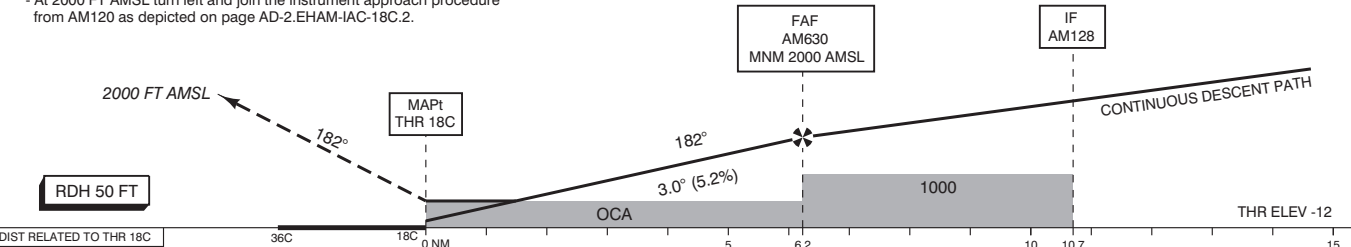


RNP 1 and RNP APCH required. RF required.

- NOTES:**
- EGNOS CH 64251 E18A.
  - Uncompensated LNAV/VNAV MNM TEMP: -15° C.
  - LNAV APCH at ATC discretion only.
  - When established on final approach maintain 160 KIAS until 4 NM before threshold.
  - In case of COM failure, the Amsterdam ACC Supervisor may be reached on telephone number +3120 406 3999.

**CAUTION:**  
Do not confuse RWY 18C with RWY 18R. RF segment ends at FAF.

- Missed approach:  
- Inform ATC immediately.  
- Track 182° MAG to AM123 and climb to 2000 FT AMSL
- Missed approach in case of communication failure:  
- Track 182° MAG and climb to 3000 FT AMSL;  
- At 2000 FT AMSL turn left and join the instrument approach procedure from AM120 as depicted on page AD-2.EHAM-IAC-18C.2.



GS IN KT	100	120	140	160	180	200	220
VERTICAL SPEED	530 FT/MIN	635 FT/MIN	745 FT/MIN	850 FT/MIN	955 FT/MIN	1060 FT/MIN	1165 FT/MIN
OCA (OCH) ELEV THR 18C: -12.0 FT							

ACFT CAT	LPV	LNAV/VNAV	LNAV	CIRCLING*	* Circling procedures to and landing on RWY 18L and 36L is not permitted, except in case of an emergency.	THR 18C	521953.0N	0044424.1E	MSA BASED ON SPL VOR/DME
A	201 (213)	242 (254)	670 (681)	630 (641)		AM123	520641.5N	0044312.4E	
B	213 (225)	248 (260)		790 (801)		AM126	523319.1N	0044230.2E	
C	221 (233)	267 (279)		890 (901)		AM128	523020.0N	0044346.4E	
D	232 (244)	293 (305)		900 (911)		AM130	522745.2N	0044410.6E	
DL						AM607	523502.0N	0043848.8E	
CEILING AND VISIBILITY MINIMA					DIRECTIONS ARE MAGNETIC DISTANCES IN NM ALTITUDES AND ELEVATIONS IN FEET	AM630	522601.7N	0044458.0E	
TAKE-OFF	DAY:	NA	NIGHT:	NA		RF arc centres:	AM127	523119.6N	0044001.1E
LANDING	DAY:		NIGHT:				AM129	522915.9N	0044746.7E
							AM131	522611.0N	0044026.5E

