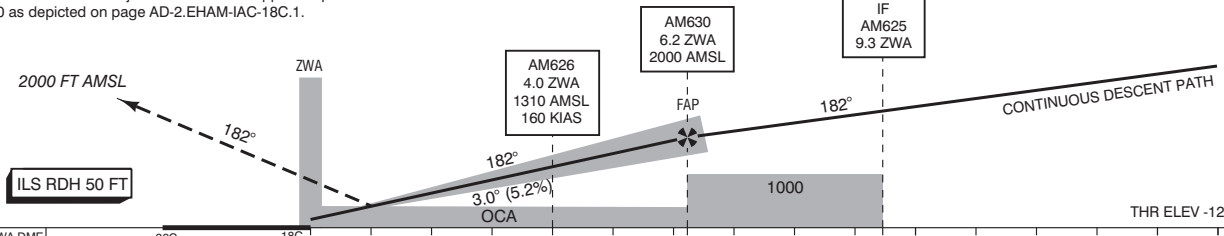


APP	119.055	Schiphol Approach / Departure
	121.205	
	118.405	Schiphol Arrival
	126.680	
TWR	118.105	Schiphol Tower Primary
	135.110	
	119.230	
	121.905	Schiphol Ground Ground Control
	121.500	General Emergency
	243.000	
ATIS	132.980	Arrival Information
LOC	109.500	ZWA
DME	CH32X	ZWA
GP	332.600	

004°20' E 004°30' 004°40' 004°50' 005°00' 005°10' E

- Missed approach:
 - Inform ATC immediately.
 - Track 182° MAG and climb to 2000 FT AMSL
- Missed approach in case of communication failure:
 - Track 182° MAG and climb to 3000 FT AMSL;
 - At 2000 FT AMSL turn left and join the instrument approach procedure from AM120 as depicted on page AD-2.EHAM-IAC-18C.1.

TRANSITION LEVEL BY ATC
TRANSITION ALTITUDE 3000 FT AMSL



DIST RELATED TO ZWA DME	36C	18C	0 NM	4.0	5	6.2	9.3	10	15
GS IN KT	100	120	140	160	180	200	220		
VERTICAL SPEED	530 FT/MIN	635 FT/MIN	745 FT/MIN	850 FT/MIN	955 FT/MIN	1060 FT/MIN	1165 FT/MIN		

OCA (OCH) ELEV THR 18C: -12.0 FT

ACFT CAT	CAT III supported		CIRCLING*	* Circling procedures to and landing on RWY 18L and 36L is not permitted, except in case of an emergency.	THR 18C AM607 AM608 AM625 AM626 AM630	521953.0N 523502.0N 523221.9N 522909.6N 522352.6N 522601.7N	0044424.1E 0043848.8E 0044341.3E 0044515.4E 0044445.3E 0044458.0E	MSA BASED ON SPL VOR/DME
	CAT I	CAT II						
A	133 (145)	(53)	630 (641)					
B	139 (151)	(63)	790 (801)					
C	149 (161)	(76)	890 (901)					
D	162 (174)	(89)	900 (911)					
DL	162 (174)	(92)						
CEILING AND VISIBILITY MINIMA				DIRECTIONS ARE MAGNETIC DISTANCES IN NM ALTITUDES AND ELEVATIONS IN FEET				
TAKE-OFF	DAY:	NA	NIGHT:	NA				
LANDING	DAY:	NA	NIGHT:	NA				

CHANGE: MNM Operating Network implementation; MAG VAR 2020; editorial.