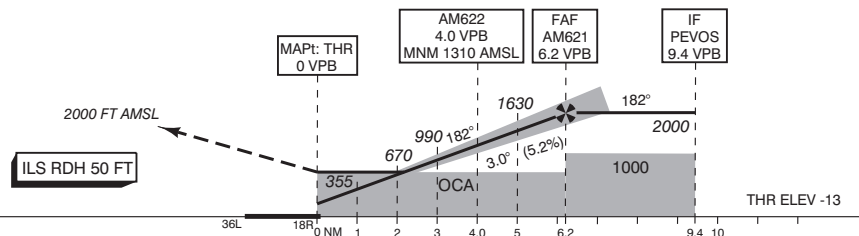


- NOTES:**
1. Navigation in the initial and intermediate approach segment is primarily based on radar vectors provided by ATC.
 2. Execution of the complete procedure overhead depicted by _____ at ATC discretion or in case of COM-failure.
 3. DME required.
 4. DME VPB reads ZERO at THR 18R.
 5. ILS approaches on RWY 06, 18C, 22, 27 or 36R may be executed simultaneously.
 6. Departures on RWY 24 may be executed simultaneously. Due to these departures strict adherence to the missed approach procedure is required.
 7. Given AM waypoints beyond the FAF must be considered to be supplementary information.
 8. In case of COM failure, the Amsterdam ACC Supervisor may be reached on telephone number +3120 406 3999.

APP	119.055	Schiphol Approach / Departure
	121.205	
	118.405	Schiphol Arrival
	126.680	
TWR	118.280	Schiphol Tower Primary
	119.230	
	118.105	
	121.560	Schiphol Ground Ground Control
	121.500	General Emergency
	243.000	
ATIS	132.980	Arrival Information
LOC	110.100	VPB
DME	CH38X	VPB
GP	334.400	

1. Missed approach
 - Inform ATC immediately.
 - Turn right as soon as practicable but not below 500 FT AMSL to AM624, MAX 220 KIAS.
 - Do not overshoot SPL R-240.
 - Climb to and cross AM624 at 2000 FT AMSL.
 - At AM624 track 300° MAG.
2. Missed approach in case of communication failure
 - Turn right as soon as practicable but not below 500 FT AMSL to AM624, MAX 220 KIAS.
 - Do not overshoot SPL R-240.
 - Climb to 3000 FT AMSL. At AM624 continue to AM240 and cross AM240 at 3000 FT AMSL.
 - After AM240, descent to 2000 FT AMSL and execute the instrument approach procedure again.

TRANSITION LEVEL BY ATC
TRANSITION ALTITUDE 3000 FT AMSL



DIST RELATED TO VPB DME		36L 18R 0 NM 1 2 3 4.0 5 6.2 9.4 10										
GS IN KT	100	120	140	160	180	200	220					
VERTICAL SPEED	530 FT/MIN	635 FT/MIN	745 FT/MIN	850 FT/MIN	955 FT/MIN	1060 FT/MIN	1165 FT/MIN					
OCA (OCH) ELEV THR 18R: -13.0 FT												
ACFT CAT	CAT III supported		LOC MAPt: THR	CIRCLING*	THR 18R 522136.9N 0044242.2E	AM240 522643.1N 0043503.5E	AM241 523239.7N 0043535.2E	AM242 523229.0N 0044053.1E	AM621 522745.7N 0044315.9E	AM622 522536.2N 0044304.1E	AM624 522109.6N 0043255.3E	MSA BASED ON SPL VOR/DME
	CAT I	CAT II										
A	128 (141)	(50)	690 (710)	630 (641)	900 (911)							
B	138 (151)	(59)		790 (801)								
C	151 (164)	(73)		890 (901)								
D	165 (178)	(89)										
DL	168 (181)	(96)										
CEILING AND VISIBILITY MINIMA				* Circling procedures to and landing on RWY 18L and 36L is not permitted, except in case of an emergency.		DIRECTIONS ARE MAGNETIC DISTANCES IN NM ALTITUDES AND ELEVATIONS IN FEET AMSL						
TAKE-OFF	DAY:	NA	NIGHT:	NA								
LANDING	DAY:											

CHANGE: MNM Operating Network implementation; MAG VAR 2020; editorial.