

**NOTES:**

1. ILS must be available.
2. DME required.
3. DME VPB reads ZERO at THR 18R.
4. Departures on RWY 24 may be executed simultaneously. Due to these departures strict adherence to the missed approach procedure is required.
5. Given AM waypoints beyond the FAP must be considered to be supplementary information.
6. In case of COM failure, the Amsterdam ACC Supervisor may be reached on telephone number +3120 406 3999.

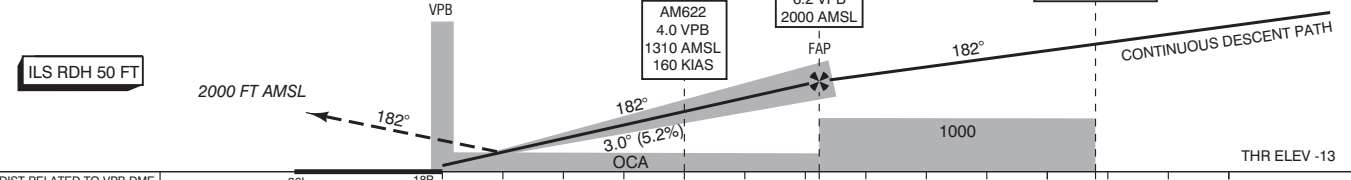
APP	119.055	Schiphol Approach / Departure
	121.205	
	118.405	Schiphol Arrival
	126.680	
TWR	118.280	Schiphol Tower Primary
	119.230	
	118.105	
	121.560	Schiphol Ground Ground Control
	121.500	General Emergency
	243.000	
ATIS	132.980	Arrival Information
LOC	110.100	VPB
DME	CH38X	VPB
GP	334.400	

004°20' E 004°30' 004°40' 004°50' 005°00' 005°10' E

1. Missed approach:
  - Inform ATC immediately.
  - Turn right as soon as practicable but not below 500 FT AMSL to AM624, MAX 220 KIAS.
  - Do not overshoot SPL R-240.
  - Climb to and cross AM624 at 2000 FT AMSL.
  - At AM624 track 300° MAG.
2. Missed approach in case of communication failure:
  - Turn right as soon as practicable but not below 500 FT AMSL to AM624, MAX 220 KIAS.
  - Do not overshoot SPL R-240.
  - Climb to 3000 FT AMSL turn right and join the instrument approach procedure from AM240 as depicted on page AD-2.EHAM-IAC-18R.1.

**TRANSITION LEVEL BY ATC  
TRANSITION ALTITUDE 3000 FT AMSL**

IF  
AM608  
10.8 VPB  
MNM 3400 AMSL



DIST RELATED TO VPB DME	36L	18R	0 NM	4.0	5	6.2	10	10.8
GS IN KT	100	120	140	160	180	200	220	
VERTICAL SPEED	530 FT/MIN	635 FT/MIN	745 FT/MIN	850 FT/MIN	955 FT/MIN	1060 FT/MIN	1165 FT/MIN	

OCA (OCH) ELEV THR 18R: -13.0 FT

ACFT CAT	CAT III supported		CIRCLING*	* Circling procedures to and landing on RWY 18L and 36L is not permitted, except in case of an emergency.	THR 18R AM604 AM607 AM608 AM621 AM622 AM624	MSA BASED ON SPL VOR/DME
	CAT I	CAT II				
A	128 (141)	(50)	630 (641)		522136.9N 0044242.2E	
B	138 (151)	(59)	790 (801)		523521.9N 0045014.1E	
C	151 (164)	(73)	890 (901)		523221.9N 0044341.8E	
D	165 (178)	(89)	900 (911)		522745.7N 0044315.9E	
DL	168 (181)	(96)			522536.2N 0044304.1E	
					522109.6N 0043255.3E	

CEILING AND VISIBILITY MINIMA			
TAKE-OFF	DAY:	NA	NIGHT: NA
LANDING	DAY:	NA	NIGHT: NA

DIRECTIONS ARE MAGNETIC  
DISTANCES IN NM  
ALTITUDES AND ELEVATIONS  
IN FEET AMSL

CHANGE: MNM Operating Network implementation; MAG VAR 2020; editorial.