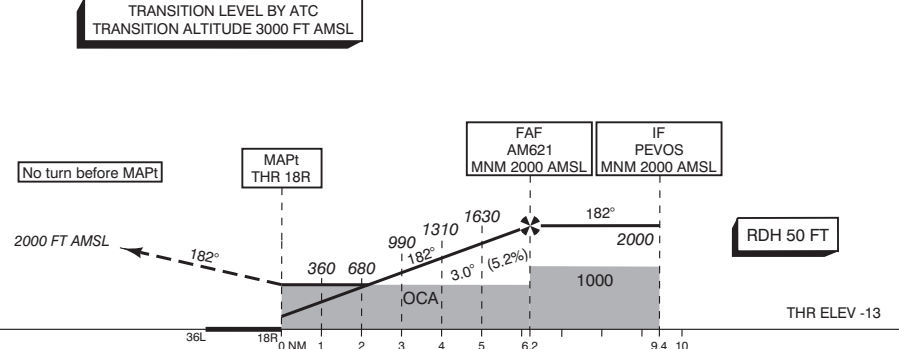


NOTES:

1. Navigation in the initial and intermediate approach segment is primarily based on radar vectors provided by ATC.
2. Execution of the complete procedure via SPL at ATC discretion or in case of COM failure.
3. EGNOS CH 43721 E18B.
4. Uncompensated LNAV/VNAV MNM TEMP: -15° C.
5. LNAV APCH at ATC discretion only.
6. When established on final approach maintain 160 KIAS until 4 NM before threshold.
7. In case of COM failure, the Amsterdam ACC Supervisor may be reached on telephone number +3120 406 3999.

APP	119.055	Schiphol Approach / Departure
	121.205	
	118.405	Schiphol Arrival
	126.680	
TWR	118.280	Schiphol Tower Primary
	119.230	
	118.105	
	121.560	Schiphol Ground Ground Control
	121.500	General Emergency
	243.000	
ATIS	132.980	Arrival Information

1. Missed approach
 - Inform ATC immediately
 - At MAPt or 500 FT AMSL, whichever comes later, turn right to AM624, MAX 220 KIAS.
 - Do not overshoot SPL R-240.
 - Climb to and cross AM624 at 2000 FT AMSL.
 - At AM624 track 300° MAG.
2. Missed approach in case of communication failure
 - At MAPt or 500 FT AMSL, whichever comes later, turn right to AM624, MAX 220 KIAS.
 - Do not overshoot SPL R-240.
 - Climb to 3000 FT AMSL. At AM624 continue to AM240 and cross AM240 at 3000 FT AMSL.
 - After AM240, descent to 2000 FT AMSL and execute the instrument approach procedure again.



DIST RELATED TO THR 18R	36L	18R	0 NM	1	2	3	4	5	6.2	9.4	10
GS IN KT	60	80	100	120	140	160	180				
VERTICAL SPEED	320 FT/MIN	425 FT/MIN	530 FT/MIN	635 FT/MIN	745 FT/MIN	850 FT/MIN	955 FT/MIN				

OCA (OCH) ELEV THR 18R: -13.0 FT											
ACFT CAT	LPV	LNAV/VNAV MNM TEMP -15°C	LNAV	CIRCLING*	* Circling procedures to and landing on RWY 18L and 36L is not permitted, except in case of an emergency.	THR 18R	522136.9N	0044242.2E	MSA BASED ON SPL VOR/DME		
A	200 (213)	293 (306)	700 (711)	630 (641)		AM240	522643.1N	0043503.5E			
B	212 (225)	304 (317)		790 (801)		AM241	523239.7N	0043535.2E			
C	220 (233)	311 (324)		890 (901)		AM242	523229.0N	0044053.1E			
D	231 (244)	320 (333)		900 (911)		AM621	522745.7N	0044315.9E			
DL					AM624	522109.6N	0043255.3E				
CEILING AND VISIBILITY MINIMA						DIRECTIONS ARE MAGNETIC DISTANCES IN NM ALTITUDES AND ELEVATIONS IN FEET AMSL					
TAKE-OFF	DAY:	NA	NIGHT:	NA							
LANDING	DAY:		NIGHT:								

CHANGE: MNM Operating Network implementation; MAG VAR 2020; editorial.