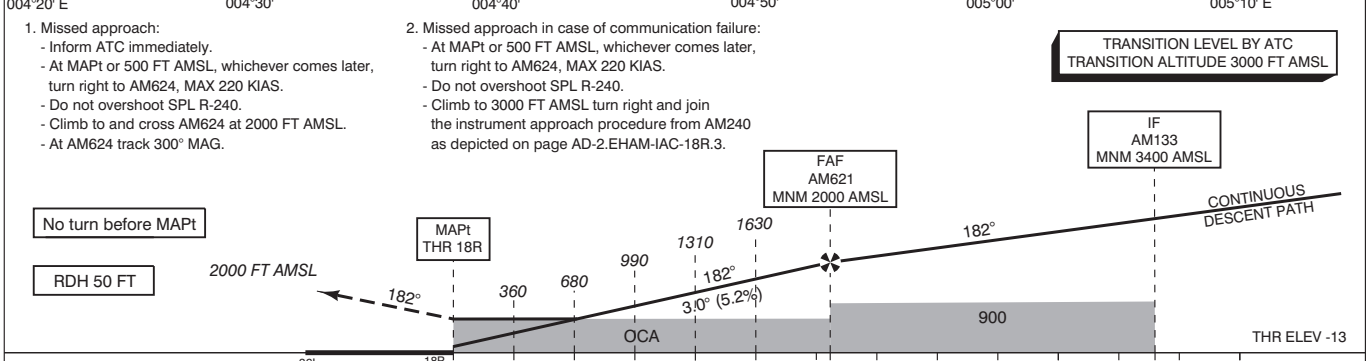


RNP 1 and RNP APCH required. RF required.

NOTES:
 1. EGNOS CH 43721 E18B.
 2. Uncompensated LNAV/VNAV MNM TEMP: -15° C.
 3. LNAV APCH at ATC discretion only.
 4. When established on final approach maintain 160 KIAS until 4 NM before threshold.
 5. In case of COM failure, the Amsterdam ACC Supervisor may be reached on telephone number +3120 406 3999.

CAUTION:
 Do not confuse RWY 18R with RWY 18C.

APP	119.055	Schiphol Approach / Departure
	121.205	
	118.405	Schiphol Arrival
	126.680	
TWR	118.105	Schiphol Tower Primary
	135.110	
	119.230	
	121.905	Schiphol Ground Ground Control
	121.500	General Emergency
	243.000	
ATIS	132.980	Arrival Information



GS IN KT	60	80	100	120	140	160	180
VERTICAL SPEED	320 FT/MIN	425 FT/MIN	530 FT/MIN	635 FT/MIN	745 FT/MIN	850 FT/MIN	955 FT/MIN

OCA (OCH) ELEV THR 18R: -13.0 FT

ACFT CAT	LPV	LNAV/VNAV	LNAV	CIRCLING*	* Circling procedures to and landing on RWY 18L and 36L is not permitted, except in case of an emergency.	THR 18R	MSA BASED ON SPL VOR/DME
A	200 (213)	293 (306)		630 (641)		522136.9N 0044242.2E	
B	212 (225)	304 (317)		790 (801)		523254.0N 0044242.8E	
C	220 (233)	311 (324)	700 (711)	890 (901)		523002.7N 0044343.8E	
D				900 (911)		522911.2N 0044323.8E	
DL	231 (244)	320 (333)				523502.0N 0043848.8E	
CEILING AND VISIBILITY MINIMA					DIRECTIONS ARE MAGNETIC DISTANCES IN NM ALTITUDES AND ELEVATIONS IN FEET	AM621	522745.7N 0044315.9E
TAKE-OFF	DAY:	NA	NIGHT:	NA		AM624	522109.6N 0043255.3E
LANDING	DAY:		NIGHT:			RF arc centres:	
						AM134	523102.5N 0043958.7E
						AM136	522920.9N 0044728.8E