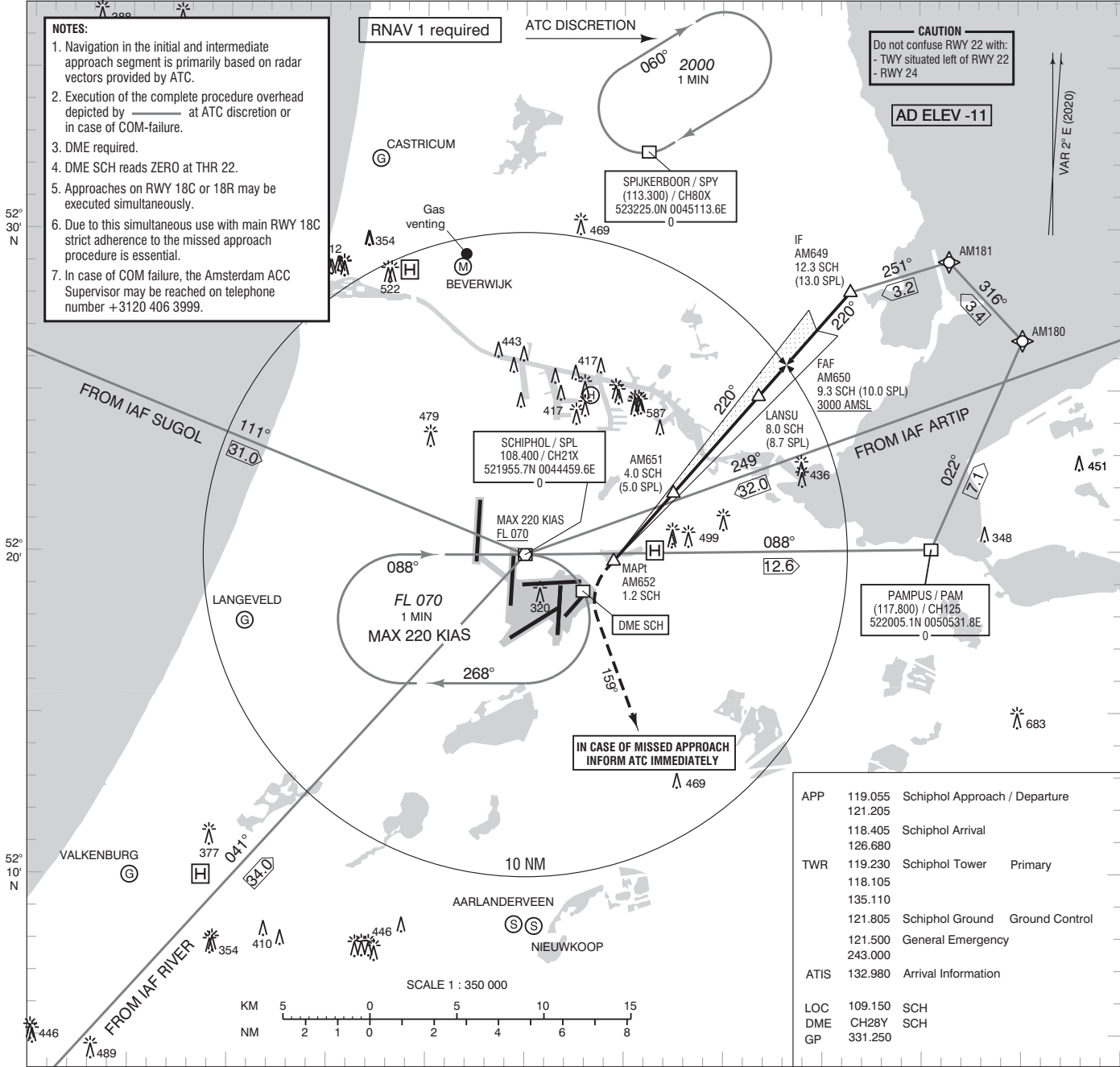


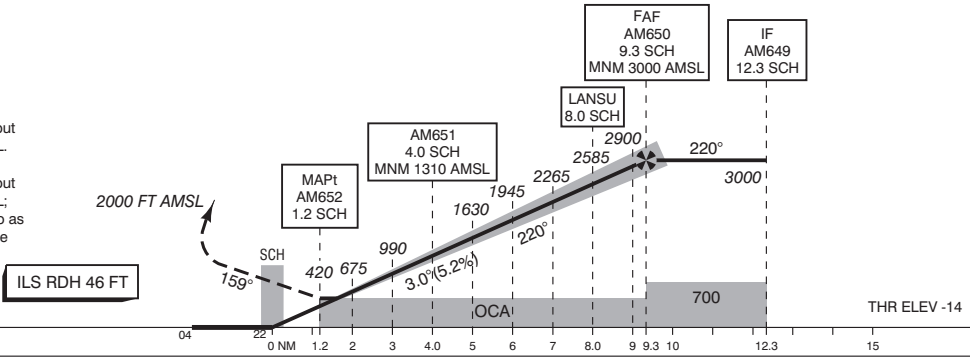
- NOTES:**
- Navigation in the initial and intermediate approach segment is primarily based on radar vectors provided by ATC.
  - Execution of the complete procedure overhead depicted by \_\_\_\_\_ at ATC discretion or in case of COM-failure.
  - DME required.
  - DME SCH reads ZERO at THR 22.
  - Approaches on RWY 18C or 18R may be executed simultaneously.
  - Due to this simultaneous use with main RWY 18C strict adherence to the missed approach procedure is essential.
  - In case of COM failure, the Amsterdam ACC Supervisor may be reached on telephone number +3120 406 3999.



APP	119.055	Schiphol Approach / Departure
	121.205	
	118.405	Schiphol Arrival
	126.680	
TWR	119.230	Schiphol Tower Primary
	118.105	
	135.110	
	121.805	Schiphol Ground Ground Control
	121.500	General Emergency
	243.000	
ATIS	132.980	Arrival Information
LOC	109.150	SCH
DME	CH28Y	SCH
GP	331.250	

TRANSITION LEVEL BY ATC  
TRANSITION ALTITUDE 3000 FT AMSL

- Missed approach:
  - Inform ATC immediately.
  - Turn left to track 159° MAG as soon as practicable but not below 400 FT AMSL and climb to 2000 FT AMSL.
- Missed approach in case of communication failure:
  - Turn left to track 159° MAG as soon as practicable but not below 400 FT AMSL and climb to 3000 FT AMSL;
  - At 2000 FT AMSL start a left climbing turn to PAM so as to cross PAM at 3000 FT AMSL and proceed with the instrument approach procedure from PAM.



GS IN KT	60	80	100	120	140	160	180
VERTICAL SPEED	320 FT/MIN	425 FT/MIN	530 FT/MIN	635 FT/MIN	745 FT/MIN	850 FT/MIN	955 FT/MIN

OCA (OCH) ELEV THR 22: -13.7 FT				MSA BASED ON SPL VOR/DME			
ACFT CAT	CAT I	LOC MAPt: 1.2 SCH	CIRCLING *	THR 22	521850.5N	0044810.9E	
A	129 (142)	540 (550)	630 (641)	AM180	522632.5N	0051011.4E	
B	141 (155)		790 (801)	AM181	522900.3N	0050628.4E	
C	151 (165)		890 (901)	AM649	522804.0N	0050127.3E	
D	164 (178)		900 (911)	AM650	522549.2N	0045812.6E	
				AM651	522150.5N	0045229.1E	
				AM652	521944.5N	0044928.3E	
CEILING AND VISIBILITY MINIMA				* Circling procedures to and landing on RWY 18L and 36L is not permitted, except in case of an emergency.		DIRECTIONS ARE MAGNETIC DISTANCES IN NM ALTITUDES AND ELEVATIONS IN FEET AMSL	
TAKE-OFF	DAY:	NA	NIGHT:				
LANDING	DAY:	NA	NIGHT:				

CHANGE: MNM Operating Network implementation; MAG VAR 2020; editorial.