

**NOTES:**

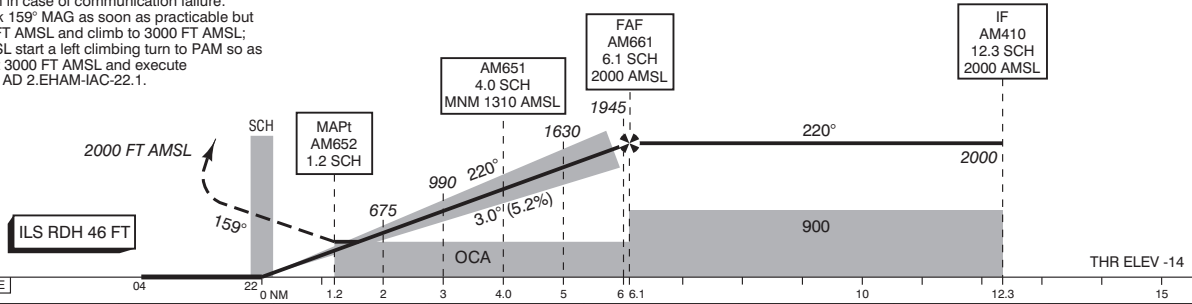
1. DME required.
2. DME SCH reads ZERO at THR 22.
3. Approaches on RWY 18C or 18R may be executed simultaneously, thus strict adherence to the missed approach procedure is essential.
4. When RWY 22 is not available, execute a circling procedure to RWY 27 unless otherwise instructed by ATC.
5. In case of COM failure, the Amsterdam ACC Supervisor may be reached on telephone number +3120 406 3999.

**CAUTION**  
Do not confuse RWY 22 with:  
- TWY situated left of RWY 22  
- RWY 24

APP	119.055	Schiphol Approach / Departure
	121.205	
	118.405	Schiphol Arrival
	126.680	
TWR	119.230	Schiphol Tower Primary
	118.105	
	135.110	
	121.805	Schiphol Ground Ground Control
	121.500	General Emergency
	243.000	
ATIS	132.980	Arrival Information
LOC	109.150	SCH
DME	CH28Y	SCH
GP	331.250	

1. Missed approach:
  - Inform ATC immediately.
  - Turn left to track 159° MAG as soon as practicable but not below 400 FT AMSL and climb to 2000 FT AMSL.
2. Missed approach in case of communication failure:
  - Turn left to track 159° MAG as soon as practicable but not below 400 FT AMSL and climb to 3000 FT AMSL;
  - At 2000 FT AMSL start a left climbing turn to PAM so as to cross PAM at 3000 FT AMSL and execute procedure from AD 2.EHAM-IAC-22.1.

TRANSITION LEVEL BY ATC  
TRANSITION ALTITUDE 3000 FT AMSL



DIST RELATED TO SCH DME	04	22	1.2	2	3	4.0	5	6.1	10	12.3	15
GS IN KT	60	80	100	120	140	160	180				
VERTICAL SPEED	320 FT/MIN	425 FT/MIN	530 FT/MIN	635 FT/MIN	745 FT/MIN	850 FT/MIN	955 FT/MIN				

OCA (OCH) ELEV THR 22: -13.7 FT				* Circling procedures to and landing on RWY 18L and 36L is not permitted, except in case of an emergency.	THR 22 521850.5N 0044810.9E AM409 523526.5N 0050103.3E AM410 522805.2N 0050129.1E AM651 522150.5N 0045229.1E AM652 521944.5N 0044928.3E AM661 522328.0N 0045449.2E	MSA BASED ON SPL VOR/DME 
ACFT CAT	CAT I	LOC MAPt: 1.2 SCH	CIRCLING *			
H	129 (142)	540 (550)	630 (641)			
CEILING AND VISIBILITY MINIMA				BEARINGS ARE MAGNETIC DISTANCES IN NM ALTITUDES AND ELEVATIONS IN FEET		
TAKE-OFF	DAY: NA	NIGHT: NA				
LANDING	DAY: NA	NIGHT: NA				