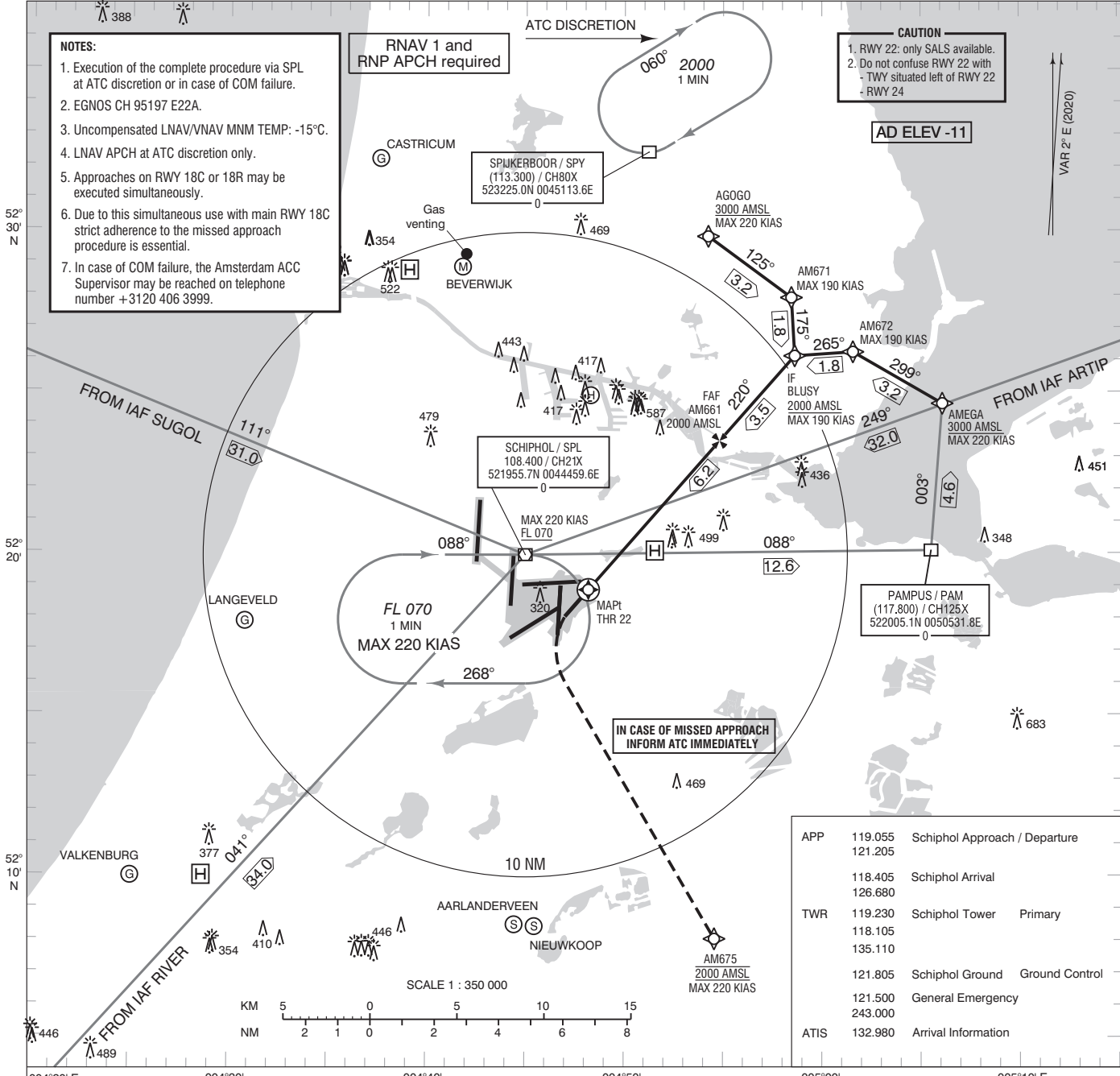


- NOTES:**
1. Execution of the complete procedure via SPL at ATC discretion or in case of COM failure.
 2. EGNOS CH 95197 E22A.
 3. Uncompensated LNAV/VNAV MNM TEMP: -15°C.
 4. LNAV APCH at ATC discretion only.
 5. Approaches on RWY 18C or 18R may be executed simultaneously.
 6. Due to this simultaneous use with main RWY 18C strict adherence to the missed approach procedure is essential.
 7. In case of COM failure, the Amsterdam ACC Supervisor may be reached on telephone number +3120 406 3999.

RNAV 1 and RNP APCH required

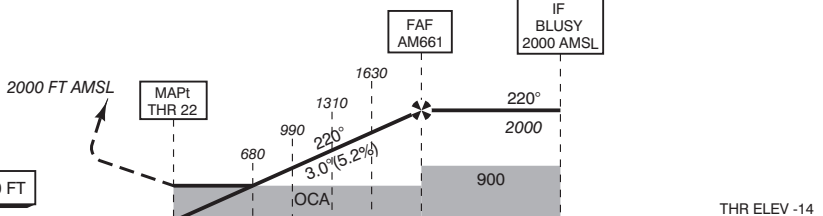
- CAUTION**
1. RWY 22: only SALS available.
 2. Do not confuse RWY 22 with - TWY situated left of RWY 22 - RWY 24



APP	119.055	Schiphol Approach / Departure
	121.205	Schiphol Arrival
	118.405	Schiphol Arrival
	126.680	Schiphol Arrival
TWR	119.230	Schiphol Tower Primary
	118.105	Schiphol Tower
	135.110	Schiphol Tower
	121.805	Schiphol Ground Ground Control
	121.500	General Emergency
	243.000	General Emergency
ATIS	132.980	Arrival Information

TRANSITION LEVEL BY ATC
TRANSITION ALTITUDE 3000 FT AMSL

1. Missed approach:
 - Inform ATC immediately.
 - Turn left to AM675 as soon as practicable but not below 400 FT AMSL and climb to 2000 FT AMSL.
2. Missed approach in case of communication failure:
 - Turn left to AM675 as soon as practicable but not below 400 FT AMSL and climb to 3000 FT AMSL;
 - At 2000 FT AMSL start a left climbing turn to PAM so as to cross PAM at 3000 FT AMSL and proceed with the instrument approach procedure from PAM.



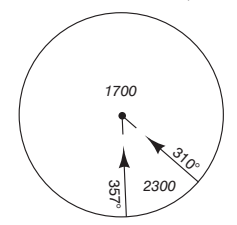
DIST RELATED TO THR 22

GS IN KT	60	80	100	120	140	160	180
VERTICAL SPEED	320 FT/MIN	425 FT/MIN	530 FT/MIN	635 FT/MIN	745 FT/MIN	850 FT/MIN	955 FT/MIN

OCA (OCH) ELEV THR 22: -13.7 FT

ACFT CAT	LPV	LNAV/VNAV MNM TEMP -15°	LNAV	CIRCLING*	THR 22	AM661	AM671	AM672	AM675
A	503 (517)	503 (517)	580 (591)	630 (641)	521850.5N	522328.0N	522754.8N	522613.9N	520802.4N
B				790 (801)	0044810.9E	0045449.2E	0045827.5E	0050134.7E	0045434.1E
C				890 (901)					
D				900 (911)					

MSA BASED ON SPL VOR/DME



CEILING AND VISIBILITY MINIMA			
TAKE-OFF	DAY:	NA	NIGHT:
LANDING	DAY:	NA	NIGHT:

* Circling procedures to and landing on RWY 18L and 36L is not permitted, except in case of an emergency.

DIRECTIONS ARE MAGNETIC
DISTANCES IN NM
ALTITUDES AND ELEVATIONS
IN FEET AMSL