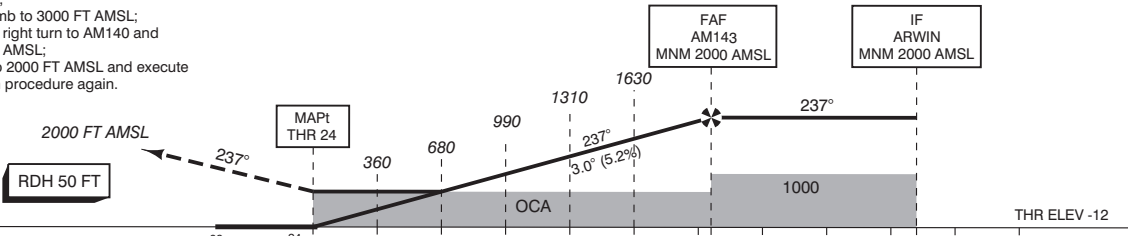


- NOTES:**
1. Navigation in the initial and intermediate approach segment is primarily based on radar vectors provided by ATC.
 2. Execution of the complete procedure via SPL at ATC discretion or in case of COM failure.
 3. EGNOS CH 92375 E24A.
 4. Uncompensated LNAV/VNAV MNM TEMP: -15° C.
 5. LNAV APCH at ATC discretion only.
 6. When established on final approach maintain 160 KIAS until 4 NM before threshold.
 7. In case of COM failure, the Amsterdam ACC Supervisor may be reached on telephone number +3120 406 3999.

APP	119.055	Schiphol Approach / Departure
	121.205	
	118.405	Schiphol Arrival
	126.680	
TWR	118.105	Schiphol Primary Tower
	135.110	
	119.230	
	121.705	Schiphol Ground / Ground Control
	121.500	General Emergency
	243.000	
ATIS	132.980	Arrival Information

1. Missed approach
 - Inform ATC immediately
 - Track 237° MAG to AM144 and climb to 2000 FT AMSL.
2. Missed approach in case of communication failure:
 - No turn before the MAPt:
 - Track 237° MAG and climb to 3000 FT AMSL;
 - At 2000 FT AMSL start a right turn to AM140 and cross AM140 at 3000 FT AMSL;
 - After AM140, descend to 2000 FT AMSL and execute the instrument approach procedure again.

TRANSITION LEVEL BY ATC
TRANSITION ALTITUDE 3000 FT AMSL



OCA (OCH) ELEV THR 24: -11.8 FT									
ACFT CAT	LPV	LNAV/VNAV MNM TEMP -15°C	LNAV	CIRCLING*	* Circling procedures to and landing on RWY 18L and 36L is not permitted, except in case of an emergency.	THR 24 521815.7N 0044636.9E		MSA BASED ON SPL VOR/DME	
A	201 (213)	363 (374)	720 (731)	630 (641)		AM140 522404.5N 0044633.1E			
B	213 (225)	375 (386)		790 (801)		AM141 522810.2N 0045717.0E			
C	221 (233)	394 (405)		890 (901)		AM142 522525.4N 0050004.9E			
D	232 (244)	421 (432)		900 (911)		AM143 522131.2N 0045507.9E			
DL	237 (248)				AM144 521121.5N 0042843.9E				
CEILING AND VISIBILITY MINIMA				DIRECTIONS ARE MAGNETIC DISTANCES IN NM ALTITUDES AND ELEVATIONS IN FEET AMSL					
TAKE-OFF	DAY: NA	NIGHT: NA							
LANDING	DAY: 1100 FT / 6000 M	NIGHT: 1100 FT / 6000 M							

CHANGE: MNM Operating Network implementation; MAG VAR 2020; editorial.