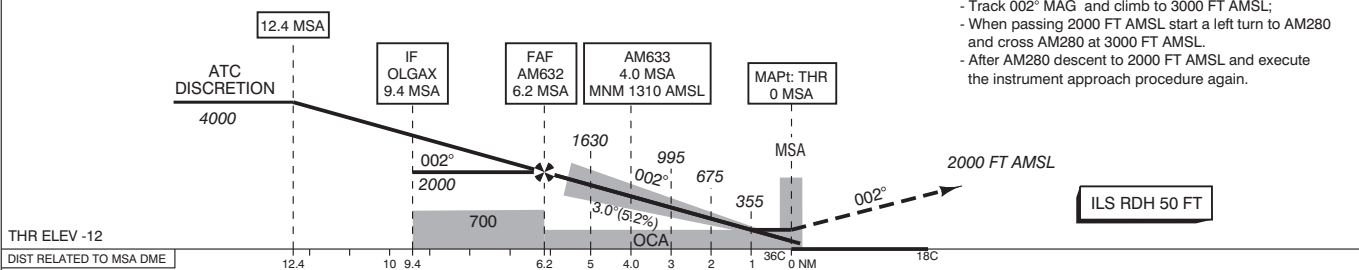


- NOTES:**
1. Navigation in the initial and intermediate approach segment is primarily based on radar vectors provided by ATC.
 2. Execution of the complete procedure overhead depicted by _____ at ATC discretion or in case of COM-failure.
 3. DME required.
 4. DME MSA reads ZERO at THR 36C.
 5. Approaches on RWY 36R may be executed simultaneously.
 6. During parallel approaches to RWY 36C and 36R expect ILS GP intercept to RWY 36C at 4000 FT AMSL (12.4 MSA).
 7. Procedure from 12.4 MSA not to be coded in the navigation database.
 8. Given AM waypoints beyond the FAF must be considered to be supplementary information.
 9. In case of missed approach expedite climb to 2000 FT AMSL.
 10. In case of COM failure, the Amsterdam ACC Supervisor may be reached on telephone number +3120 406 3999.

APP	119.055	Schiphol Approach / Departure
	121.205	
	118.405	Schiphol Arrival
	126.680	
TWR	118.105	Schiphol Tower Primary
	119.230	
	135.110	
	121.905	Schiphol Ground Ground Control
	121.500	General Emergency
	243.000	
ATIS	132.980	Arrival Information
LOC	108.750	MSA
DME	CH24Y	MSA
GP	330.350	

TRANSITION LEVEL BY ATC
TRANSITION ALTITUDE 3000 FT AMSL

1. Missed approach:
 - Inform ATC immediately.
 - Track 002° MAG and climb to 2000 FT AMSL.
2. Missed approach in case of communication failure:
 - Track 002° MAG and climb to 3000 FT AMSL;
 - When passing 2000 FT AMSL start a left turn to AM280 and cross AM280 at 3000 FT AMSL.
 - After AM280 descent to 2000 FT AMSL and execute the instrument approach procedure again.

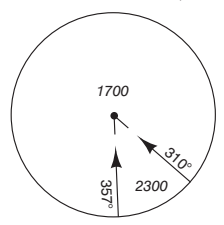


GS IN KT	100	120	140	160	180	200	220
TIME AND VERTICAL SPEED	530 FT/MIN	635 FT/MIN	745 FT/MIN	850 FT/MIN	955 FT/MIN	1060 FT/MIN	1165 FT/MIN

OCA (OCH) ELEV THR 36C: -12.0 FT

ACFT CAT	CAT III supported		LOC MAPT: THR	CIRCLING *	THR 36C 521821.0N 0044415.7E	AM280 521451.9N 0043546.5E	AM281 520751.5N 0043508.1E	AM282 520740.3N 0044028.9E	AM632 521212.4N 0044341.9E	AM633 521421.7N 0044353.7E
	CAT I	CAT II								
A	123 (135)	(50)	320 (330)	630 (641)						
B	133 (145)	(59)		790 (801)						
C	143 (155)	(73)		890 (901)						
D	149 (161)	(86)		900 (911)						
DL	149 (161)	(86)								

CEILING AND VISIBILITY MINIMA				* Circling procedures to and landing on RWY 18L and 36L is not permitted, except in case of an emergency.	DIRECTIONS ARE MAGNETIC DISTANCES IN NM ALTITUDES AND ELEVATIONS IN FEET AMSL
TAKE-OFF	DAY :	NIGHT :	NA		
LANDING	DAY :	NIGHT :	NA		



CHANGE: MNM Operating Network implementation; MAG VAR 2020; editorial.