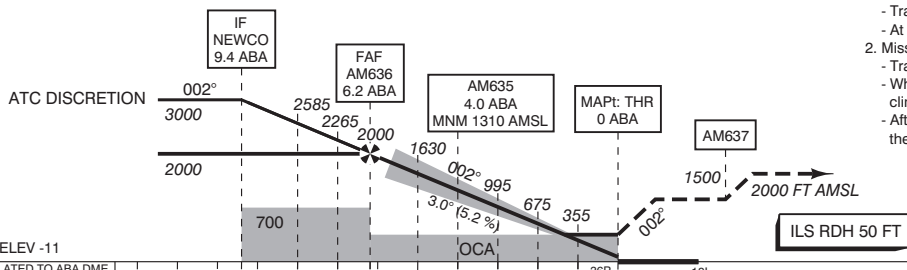


APP	119.055	Schiphol Approach / Departure
	121.205	
	118.405	Schiphol Arrival
	126.680	
TWR	119.230	Schiphol Tower Primary
	118.105	
	135.110	
	121.805	Schiphol Ground Ground Control
	121.500	General Emergency
	243.000	
ATIS	132.980	Arrival Information
LOC	111.950	ABA
DME	CH56Y	ABA
GP	330.950	

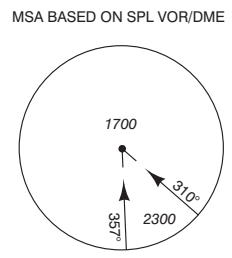
TRANSITION LEVEL BY ATC
TRANSITION ALTITUDE 3000 FT AMSL



1. Missed approach:
 - Inform ATC immediately.
 - Track 002° MAG to AM637 and climb to 1500 FT AMSL.
 - At AM637 continue to AM163 climbing to 2000 FT AMSL.
2. Missed approach in case of communication failure:
 - Track 002° MAG and climb to 1500 FT AMSL;
 - When 1500 FT AMSL is reached start a right turn to AM160, climb to cross AM160 at 3000 FT AMSL;
 - After AM160, descend to 2000 FT AMSL and execute the instrument approach procedure again.

GS IN KT	100	120	140	160	180	200	220
TIME AND VERTICAL SPEED	530 FT/MIN	635 FT/MIN	745 FT/MIN	850 FT/MIN	955 FT/MIN	1060 FT/MIN	1165 FT/MIN

OCA (OCH) ELEV THR 36R: -11.1 FT							
ACFT CAT	CAT III supported		LOC MAPt: THR	CIRCLING*	THR 36R	521727.0N	0044638.5E
	CAT I	CAT II			AM160	521330.0N	0045418.0E
A	198 (209)	(59)	430 (440)	630 (641)	AM161	520624.0N	0045338.5E
B	208 (219)	(69)		790 (801)	AM162	520635.2N	0044825.7E
C	217 (228)	(82)		890 (901)	AM163	523018.0N	0044750.5E
D	227 (238)	(99)		900 (911)	AM635	521327.7N	0044616.3E
DL	227 (238)	(99)			AM636	521118.5N	0044604.4E
					AM637	522224.2N	0044706.0E
CEILING AND VISIBILITY MINIMA				* Circling procedures to and landing on RWY 18L and 36L is not permitted, except in case of an emergency.		DIRECTIONS ARE MAGNETIC DISTANCES IN NM ALTITUDES AND ELEVATIONS IN FEET AMSL	
TAKE-OFF	DAY:	NA	NIGHT:				
LANDING	DAY:		NIGHT:				



CHANGE: MNM Operating Network implementation; MAG VAR 2020; editorial.