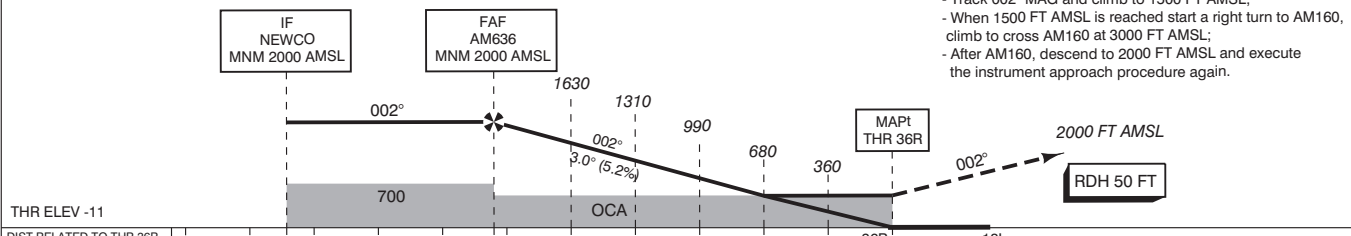


APP	119.055	Schiphol Approach / Departure
	121.205	
	118.405	Schiphol Arrival
	126.680	
TWR	118.105	Schiphol Tower Primary
	135.110	
	119.230	
	121.805	Schiphol Ground Ground Control
	121.500	General Emergency
	243.000	
ATIS	132.980	Arrival Information

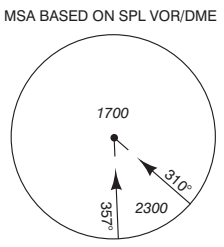
TRANSITION LEVEL BY ATC
TRANSITION ALTITUDE 3000 FT AMSL

- Missed approach
 - Inform ATC immediately
 - Track 002° MAG to AM637 and climb to 1500 FT AMSL.
 - At AM637 continue to AM163 climbing to 2000 FT AMSL.
- Missed approach in case of communication failure:
 - Track 002° MAG and climb to 1500 FT AMSL;
 - When 1500 FT AMSL is reached start a right turn to AM160, climb to cross AM160 at 3000 FT AMSL;
 - After AM160, descend to 2000 FT AMSL and execute the instrument approach procedure again.



THR ELEV -11								
DIST RELATED TO THR 36R	10	9.4	6.2	5	4	3	2	1
GS IN KT	60	80	100	120	140	160	180	
VERTICAL SPEED	320 FT/MIN	425 FT/MIN	530 FT/MIN	635 FT/MIN	745 FT/MIN	850 FT/MIN	955 FT/MIN	

OCA (OCH) ELEV THR 36R: -11.1 FT							
ACFT CAT	LPV	LNAV/VNAV MNM TEMP -15°C	LNAV	CIRCLING*	* Circling procedures to and landing on RWY 18L and 36L is not permitted, except in case of an emergency.	THR 36R	521727.0N 0044638.5E
A	222 (233)	299 (310)	470 (481)	630 (641)		AM160	521330.0N 0045418.0E
B	234 (245)	311 (322)		790 (801)		AM161	520624.0N 0045338.5E
C	243 (254)	330 (341)		890 (901)		AM162	520635.2N 0044825.7E
D	253 (264)	357 (368)		900 (911)		AM163	523018.0N 0044750.5E
DL						AM636	521118.5N 0044604.4E
					AM637	522224.2N 0044706.0E	
CEILING AND VISIBILITY MINIMA				DIRECTIONS ARE MAGNETIC DISTANCES IN NM ALTITUDES AND ELEVATIONS IN FEET AMSL			
TAKE-OFF	DAY:	NA	NIGHT:	NA			
LANDING	DAY:	NA	NIGHT:	NA			



CHANGE: MNM Operating Network implementation; MAG VAR 2020; editorial.