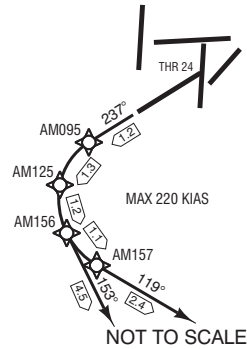


ANDIK 2S, ARNEM 3S, LOPIK 3S, KUDAD 3S or RENDI 2S: [AND2SY], [ARN3SY], [LOP3SY], [KUD3SY] or [REN2SY] is the preferred coding with radius to fix (RF) turn.

[AND2SY], [ARN3SY], [LOP3SY], [KUD3SY] or [REN2SY] RNP 1 and RF required.

For additional requirements see AD 2.22 §1.5.1.4 and §1.5.2, specific remark 6.



TRANSITION ALTITUDE: 3000 AMSL

After departure climb to FL 060

MAX 250 KIAS below FL 100 unless otherwise instructed

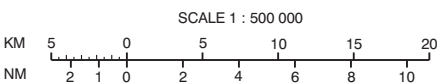
For continuation of the routes see AD 2.EHAM-SID-OVERVIEW

NOTE:
For crossing conditions on ATS routes see AD 2.22 paragraph 1.5.3. (due to MIL areas or crossing traffic)

RNAV 1 required

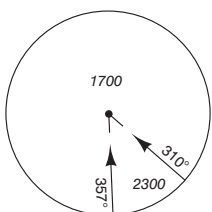
52° 40' N
52° 30'
52° 20'
52° 10'
52° 00' N

004°10'E 004°20' 004°30' 004°40' 004°50' 005°00' 005°10' 005°20'E



SCALE 1 : 500 000

MSA BASED ON SPL VOR/DME



DISTANCES IN NM
ALTITUDES IN FEET
DIRECTIONS ARE MAGNETIC
AVERAGE VAR 2° E (2020)

— SID
— ATS ROUTE

THR 24 521815.7N 0044636.9E
AM003 521024.5N 0044446.2E
AM004 515918.7N 0044904.1E
AM005 521625.8N 0044151.0E
AM008 521230.0N 0044600.0E
AM026 521016.9N 0045211.2E
AM050 520919.2N 0045504.7E
AM095 SEE SID DESCRIPTION
AM125 SEE SID DESCRIPTION
AM156 SEE SID DESCRIPTION
AM157 SEE SID DESCRIPTION

TWR	135.110	Schiphol Tower	Primary
	119.230		
	118.105		
APP	119.055	Schiphol Approach / Departure	
	121.205		
	121.500	General Emergency	
	243.000		
ATIS	122.205	Departure Information	