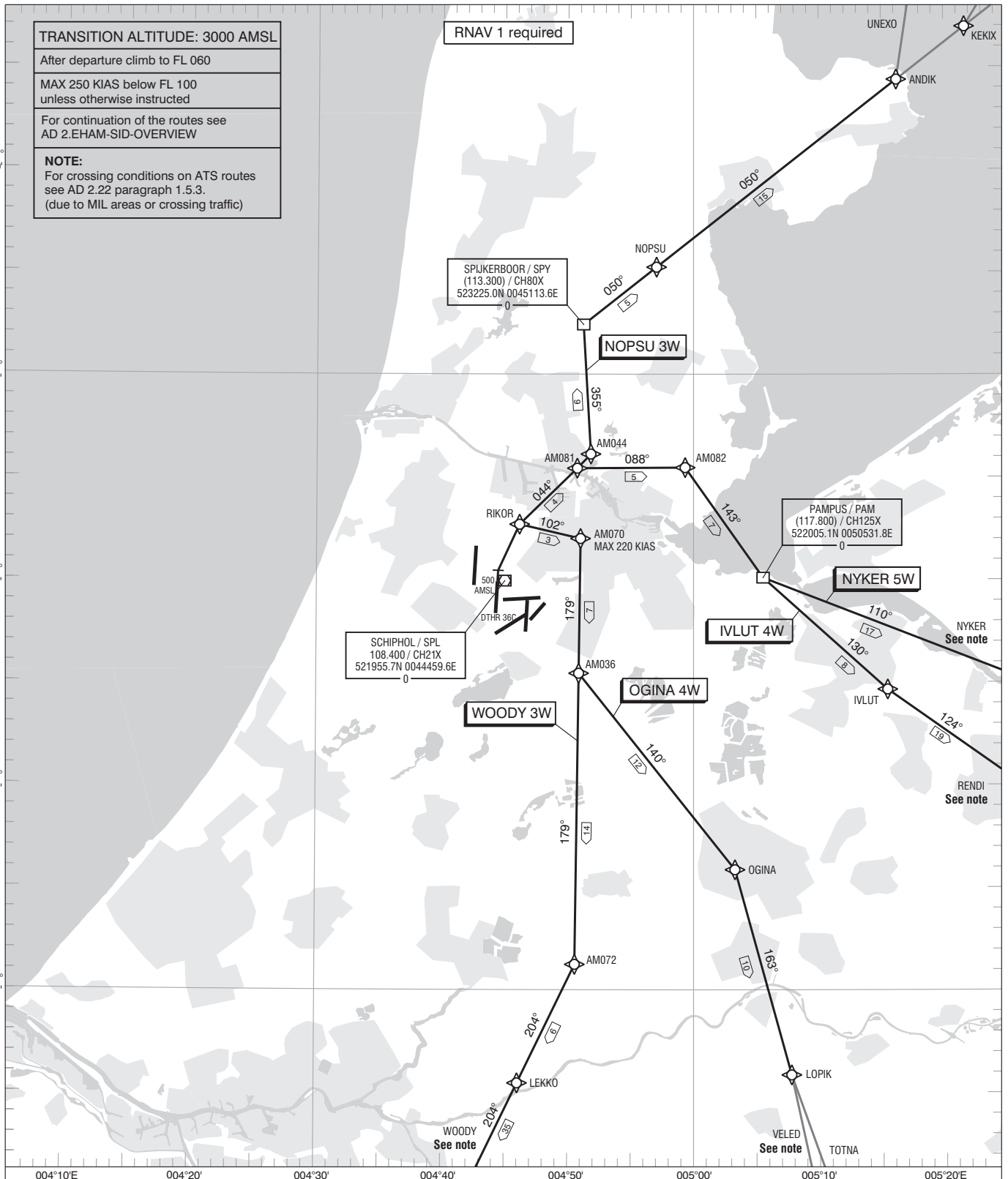


**TRANSITION ALTITUDE: 3000 AMSL**  
 After departure climb to FL 060  
 MAX 250 KIAS below FL 100  
 unless otherwise instructed  
 For continuation of the routes see  
 AD 2.EHAM-SID-OVERVIEW  
**NOTE:**  
 For crossing conditions on ATS routes  
 see AD 2.22 paragraph 1.5.3.  
 (due to MIL areas or crossing traffic)

RNAV 1 required

52° 40' N  
52° 30'  
52° 20'  
52° 10'  
52° 00' N



SCHIPHOL / SPL  
108.400 / CH21X  
521955.7N 0044459.6E

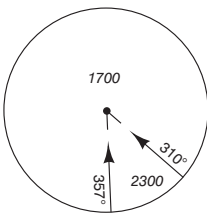
SPIJKERBOOR / SPY  
(113.300) / CH80X  
523225.0N 0045113.6E

PAMPUS / PAM  
(117.800) / CH125X  
522005.1N 0050531.8E

DTHR 36C	521821.0N 0044415.7E
AM036	521525.4N 0045052.4E
AM044	522606.2N 0045149.3E
AM070	522159.3N 0045100.5E
AM072	520114.1N 0045034.8E
AM081	522524.8N 0045044.5E
AM082	522526.9N 0045919.8E

TWR	118.105	Schiphol Tower	Primary
	119.230		
	135.110		
APP	119.055	Schiphol Approach / Departure	
	121.205		
	121.500	General Emergency	
	243.000		
ATIS	122.205	Departure Information	

MSA BASED ON SPL VOR/DME



DISTANCES IN NM  
 ALTITUDES IN FEET  
 DIRECTIONS ARE MAGNETIC  
 AVERAGE VAR 2° E (2020)

— SID  
 — ATS ROUTE

CHANGE: DIST AM036 -AM072; editorial.