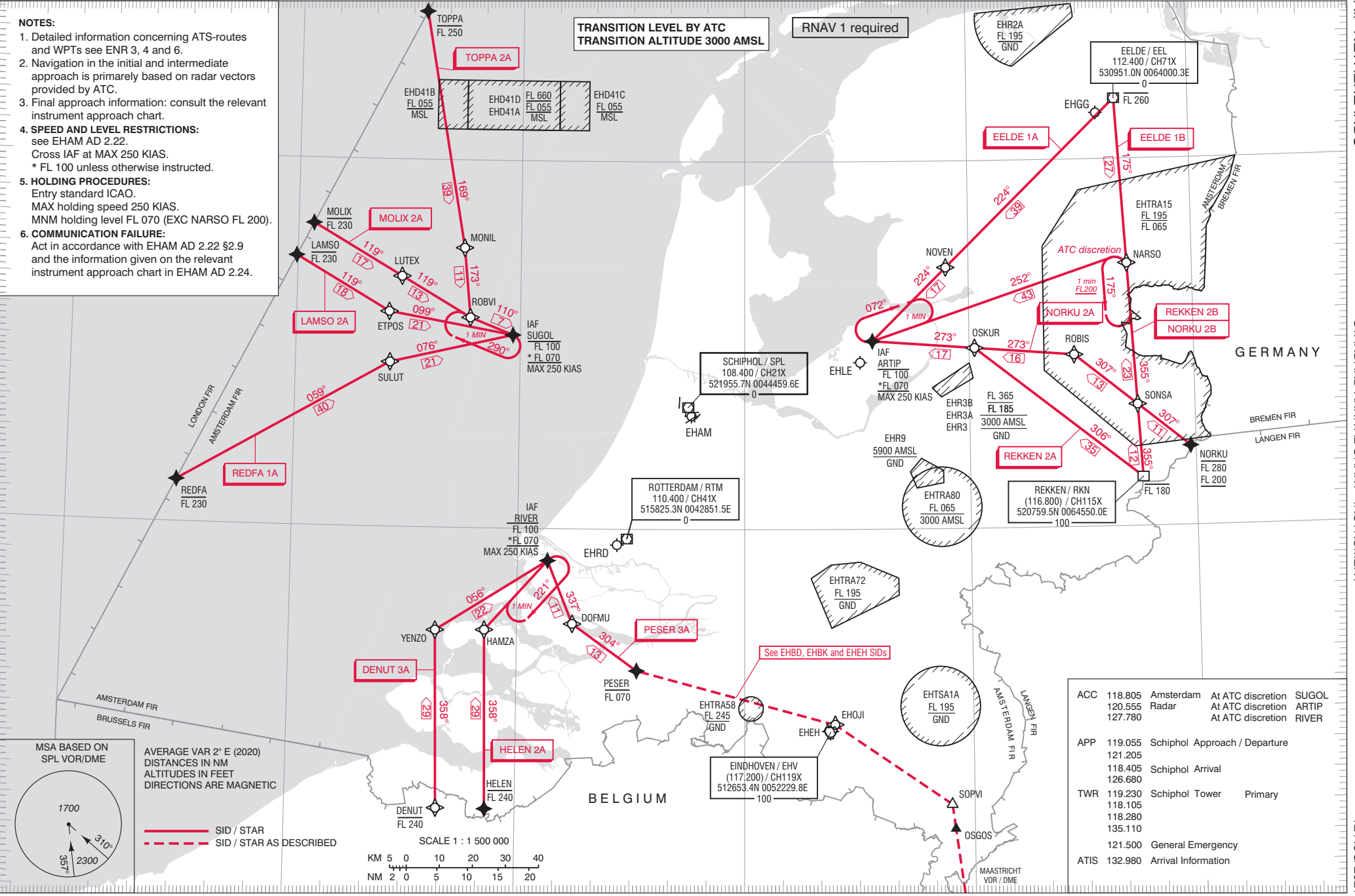


- NOTES:**
- Detailed information concerning ATS-routes and WPTs see ENR 3, 4 and 6.
  - Navigation in the initial and intermediate approach is primarily based on radar vectors provided by ATC.
  - Final approach information: consult the relevant instrument approach chart.
  - SPEED AND LEVEL RESTRICTIONS:** see EHAM AD 2.22. Cross IAF at MAX 250 KIAS. \* FL 100 unless otherwise instructed.
  - HOLDING PROCEDURES:** Entry standard ICAO. MAX holding speed 250 KIAS. MNM holding level FL 070 (EXC NARSO FL 200).
  - COMMUNICATION FAILURE:** Act in accordance with EHAM AD 2.22 §2.9 and the information given on the relevant instrument approach chart in EHAM AD 2.24.

TRANSITION LEVEL BY ATC  
TRANSITION ALTITUDE 3000 AMSL

RNAV 1 required



ACC	118.805	Amsterdam	At ATC discretion	SUGOL
	120.555	Radar	At ATC discretion	ARTIP
	127.780		At ATC discretion	RIVER
APP	119.055	Schiphol Approach / Departure		
	121.205			
	118.405	Schiphol Arrival		
	126.680			
TWR	119.230	Schiphol Tower	Primary	
	118.105			
	118.280			
	135.110			
	121.500	General Emergency		
ATIS	132.980	Arrival Information		