

NOTES:
 1. ATC may deviate from the transitions by radar vectors.
 2. Rejoining the transition may take place at SOKSI.

Altitudes / Speeds:
 ENTRY LEVELS SCHIPHOL TMA: Cross IAF at FL 100.
 During the transition, descend to or maintain a level as instructed by ATC.

When cleared for SOKSI 2A approach:

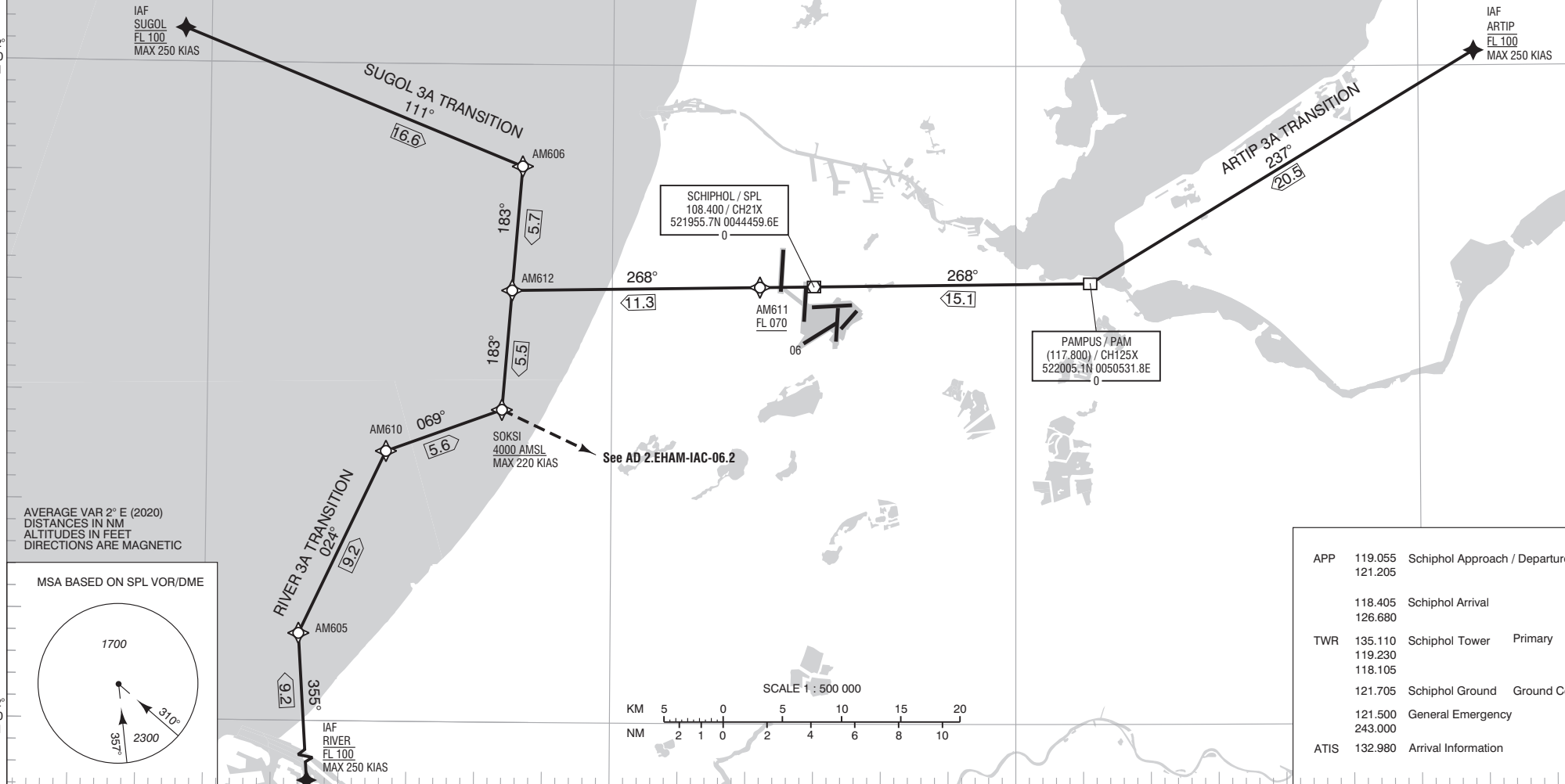
- Continue via the transition.
- Establish a continuous descent path.
- The MNM altitudes shall be respected.
- The published speeds are mandatory.
- Execute the ILS approach RWY 06.

TRANSITIONS:

AM605	520358.9N	0040657.7E
AM606	522520.8N	0042316.5E
AM610	521219.2N	0041317.7E
AM611	521953.5N	0044058.4E
AM612	521941.3N	0042233.3E

RNAV 1 required

TRANSITION LEVEL BY ATC
TRANSITION ALTITUDE 3000 AMSL

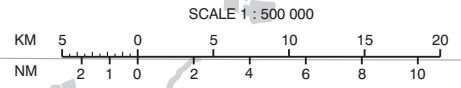
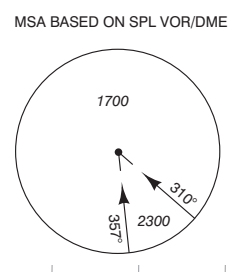


SCHIPHOL / SPL
 108.400 / CH21X
 521955.7N 0044459.6E

PAMPUS / PAM
 (117.800) / CH125X
 522005.1N 0050531.8E

See AD 2.EHAM-IAC-06.2

AVERAGE VAR 2° E (2020)
 DISTANCES IN NM
 ALTITUDES IN FEET
 DIRECTIONS ARE MAGNETIC



APP	119.055	Schiphol Approach / Departure	
	121.205		
	118.405	Schiphol Arrival	
	126.680		
TWR	135.110	Schiphol Tower	Primary
	119.230		
	118.105		
	121.705	Schiphol Ground	Ground Control
	121.500	General Emergency	
	243.000		
ATIS	132.980	Arrival Information	