

NOTES:
 1. ATC may deviate from the transitions by radar vectors.
 2. Rejoining the transition may take place at NIRSI.

Altitudes / Speeds:
 ENTRY LEVELS SCHIPHOL TMA: Cross IAF at FL 100.
 During the transition, descend to or maintain a level as instructed by ATC.

When cleared for an approach via NARIX or NIRSI:

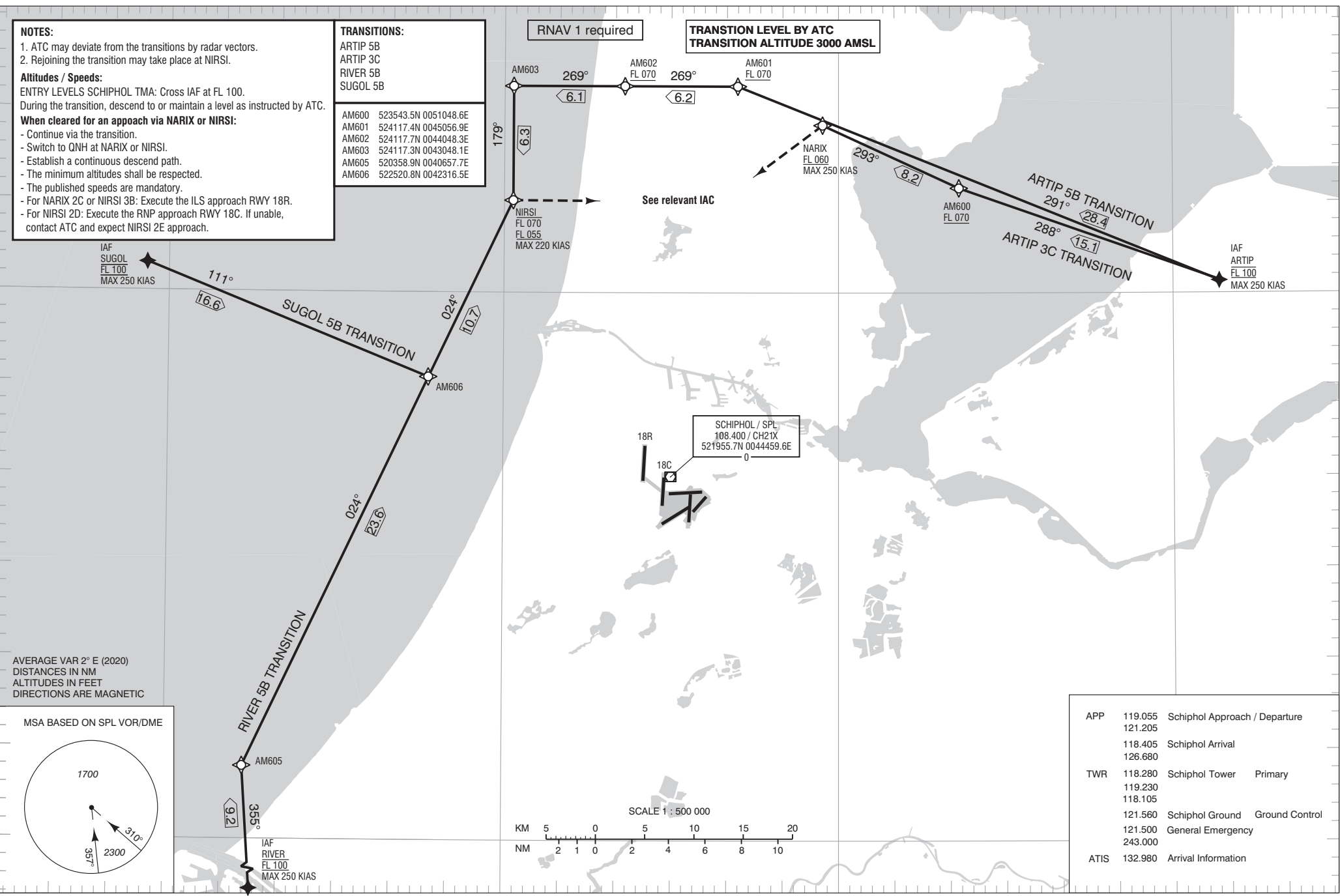
- Continue via the transition.
- Switch to QNH at NARIX or NIRSI.
- Establish a continuous descend path.
- The minimum altitudes shall be respected.
- The published speeds are mandatory.
- For NARIX 2C or NIRSI 3B: Execute the ILS approach RWY 18R.
- For NIRSI 2D: Execute the RNP approach RWY 18C. If unable, contact ATC and expect NIRSI 2E approach.

TRANSITIONS:

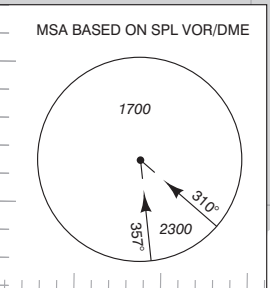
ARTIP 5B	ARTIP 3C	RIVER 5B	SUGOL 5B
AM600 523543.5N 0051048.6E	AM601 524117.4N 0045056.9E	AM602 524117.7N 0044048.3E	AM603 524117.3N 0043048.1E
AM605 520358.9N 0040657.7E	AM606 522520.8N 0042316.5E		

RNAV 1 required

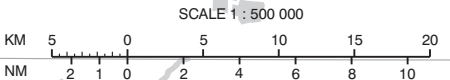
**TRANSITION LEVEL BY ATC
 TRANSITION ALTITUDE 3000 AMSL**



AVERAGE VAR 2° E (2020)
 DISTANCES IN NM
 ALTITUDES IN FEET
 DIRECTIONS ARE MAGNETIC



SCHIPHOL / SPL
 108.400 / CH21X
 521955.7N 0044459.6E
 0



APP	119.055	Schiphol Approach / Departure
	121.205	
	118.405	Schiphol Arrival
	126.680	
TWR	118.280	Schiphol Tower Primary
	119.230	
	118.105	
	121.560	Schiphol Ground Ground Control
	121.500	General Emergency
	243.000	
ATIS	132.980	Arrival Information