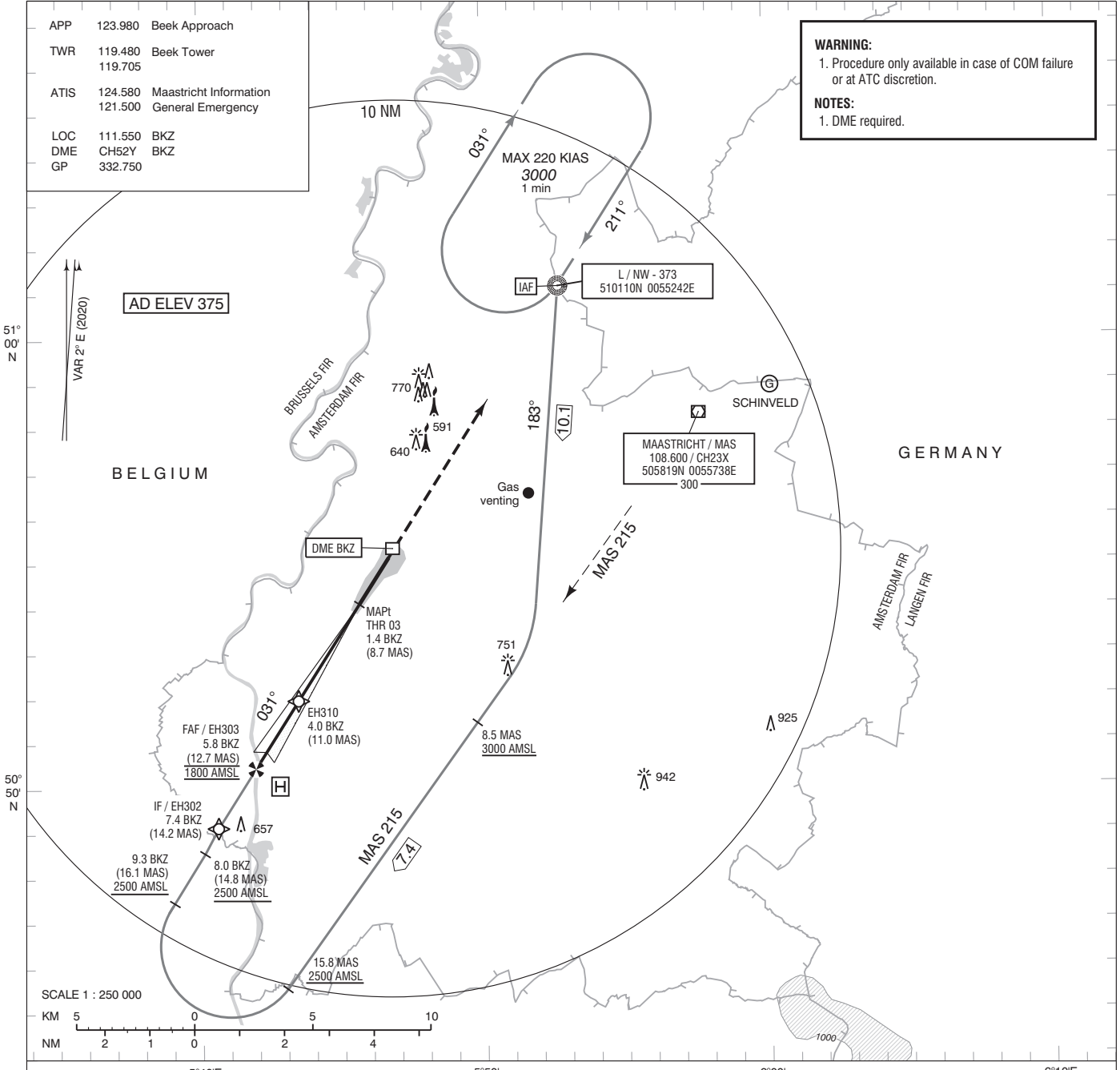


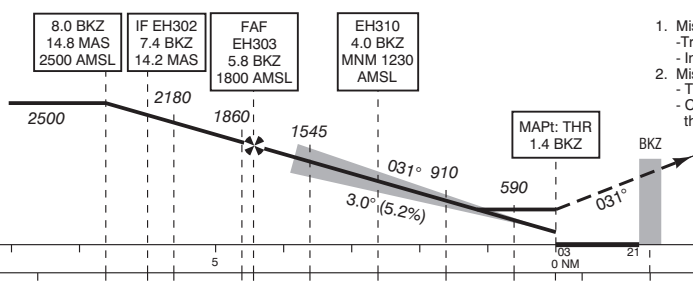
APP 123.980 Beek Approach  
TWR 119.480 Beek Tower  
119.705  
ATIS 124.580 Maastricht Information  
121.500 General Emergency  
LOC 111.550 BKZ  
DME CH52Y BKZ  
GP 332.750

**WARNING:**  
1. Procedure only available in case of COM failure or at ATC discretion.  
**NOTES:**  
1. DME required.



DO NOT DESCEND BELOW THE DESCENT PROFILE

TRANSITION LEVEL BY ATC  
TRANSITION ALTITUDE 3000 FT AMSL



- Missed approach:  
- Track 031° MAG and climb to 2000 FT AMSL.  
- Inform ATC.
- Missed approach in case of communication failure:  
- Track 031° MAG to L-NW and climb to 3000 FT AMSL;  
- Cross L-NW at 3000 FT AMSL and execute the instrument approach procedure again.

THR ELEV 365		DIST RELATED TO BKZ DME		GS IN KT		VERTICAL SPEED		OCA (OCH) ELEV THR 03: 365.2 FT		MSA BASED ON MAS VOR/DME 	
				60	80	100	120	140	160		180
				320 FT/MIN	425 FT/MIN	530 FT/MIN	635 FT/MIN	745 FT/MIN	850 FT/MIN		955 FT/MIN
ACFT CAT	CAT I	LOC MAP: THR	CIRCLING	THR 03	505406.7N	0054536.2E					
A	513 (148)	720 (360)	890 (520)	EH302	504907.9N	0054034.5E					
B	523 (158)		940 (570)	EH303	505027.1N	0054154.3E					
C	533 (168)		1170 (800)	EH310	505157.6N	0054325.7E					
D	543 (178)										
DL	553 (188)										
CEILING AND VISIBILITY MINIMA		DIRECTIONS ARE MAGNETIC DISTANCES IN NM ALTITUDES AND ELEVATIONS IN FEET									
TAKE-OFF	DAY:	NA		NIGHT:	NA						
LANDING	DAY:	NA		NIGHT:	NA						