

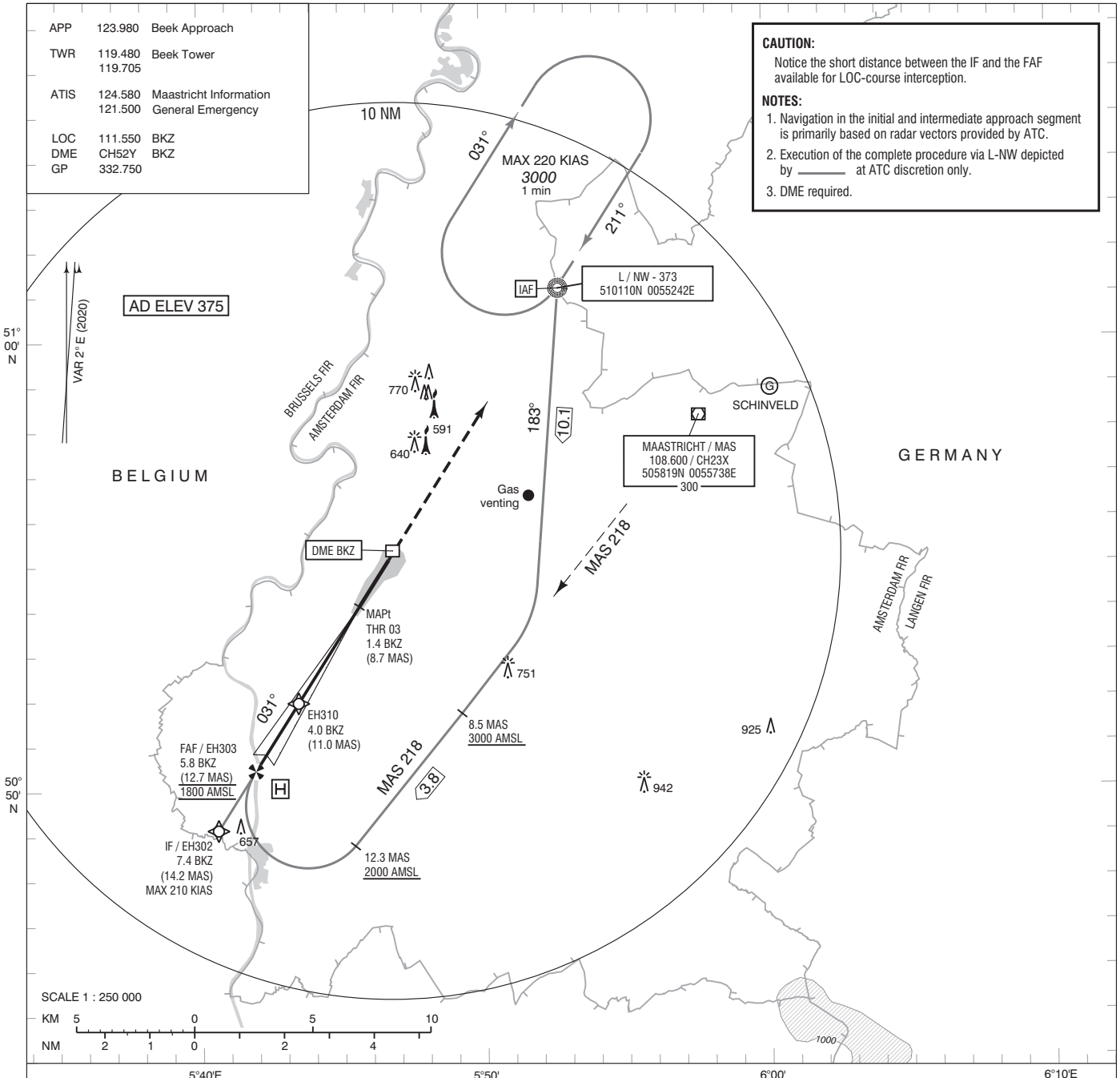
APP 123.980 Beek Approach
TWR 119.480 Beek Tower
119.705
ATIS 124.580 Maastricht Information
121.500 General Emergency
LOC 111.550 BKZ
DME CH52Y BKZ
GP 332.750

CAUTION:

Notice the short distance between the IF and the FAF available for LOC-course interception.

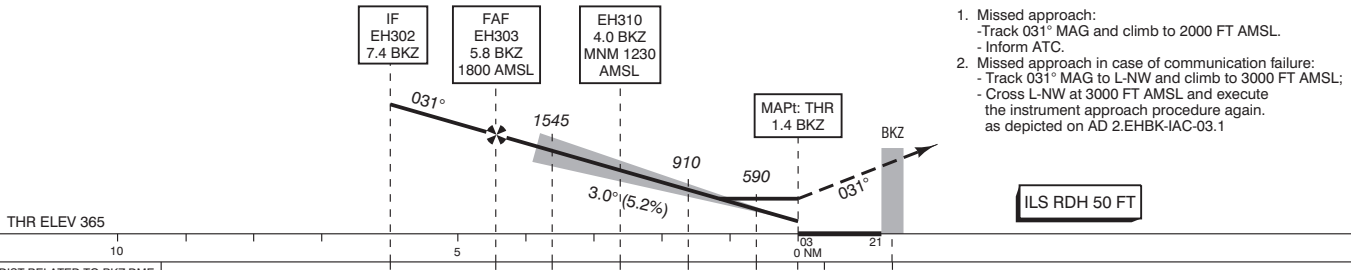
NOTES:

1. Navigation in the initial and intermediate approach segment is primarily based on radar vectors provided by ATC.
2. Execution of the complete procedure via L-NW depicted by _____ at ATC discretion only.
3. DME required.



DO NOT DESCEND BELOW THE DESCENT PROFILE

TRANSITION LEVEL BY ATC
TRANSITION ALTITUDE 3000 FT AMSL



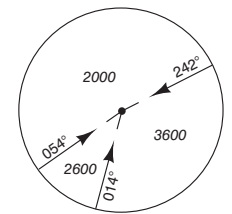
1. Missed approach:
- Track 031° MAG and climb to 2000 FT AMSL.
- Inform ATC.
2. Missed approach in case of communication failure:
- Track 031° MAG to L-NW and climb to 3000 FT AMSL;
- Cross L-NW at 3000 FT AMSL and execute the instrument approach procedure again, as depicted on AD 2.EHBK-IAC-03.1

THR ELEV 365	10	5	4	3	2	1	0 NM
DIST RELATED TO BKZ DME	7.4	5.8	5	4.0	3	2	1.4
GS IN KT	60	80	100	120	140	160	180
VERTICAL SPEED	320 FT/MIN	425 FT/MIN	530 FT/MIN	635 FT/MIN	745 FT/MIN	850 FT/MIN	955 FT/MIN

OCA (OCH) ELEV THR 03: 365.2 FT

ACFT CAT	CAT I	LOC MAPt: THR	CIRCLING	THR 03	EH302	EH303	EH310
A	513 (148)	720 (360)	890 (520)	505406.7N	504907.9N	505027.1N	505157.6N
B	523 (158)		940 (570)	0054536.2E	0054034.5E	0054154.3E	0054325.7E
C	533 (168)		1170 (800)				
D	543 (178)						
DL	553 (188)						

MSA BASED ON MAS VOR/DME



CEILING AND VISIBILITY MINIMA				DIRECTIONS ARE MAGNETIC DISTANCES IN NM ALTITUDES AND ELEVATIONS IN FEET			
TAKE-OFF	DAY:	NA	NIGHT:	NA	DAY:	NA	NIGHT:
LANDING	DAY:	NA	NIGHT:	NA	DAY:	NA	NIGHT: