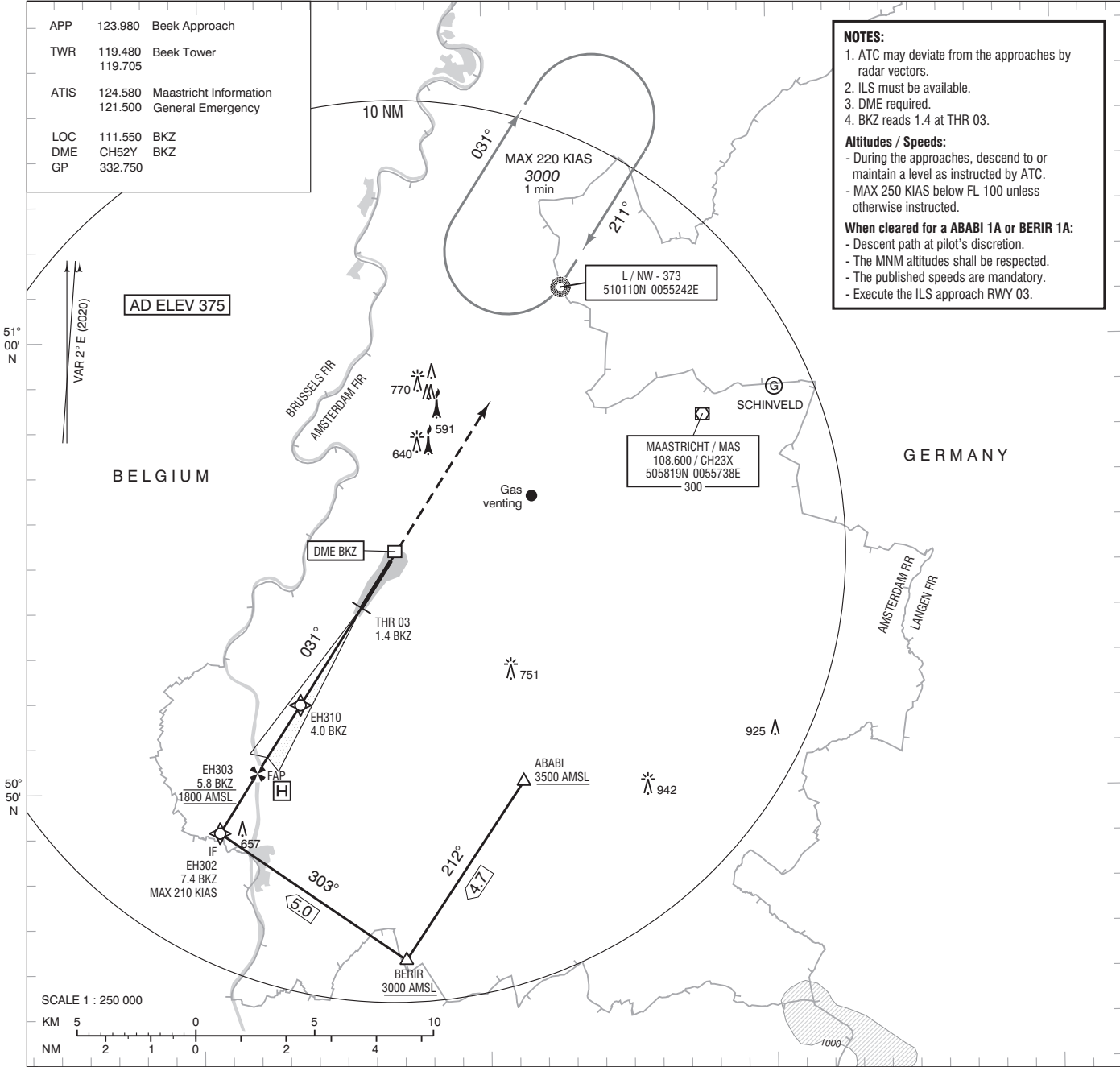


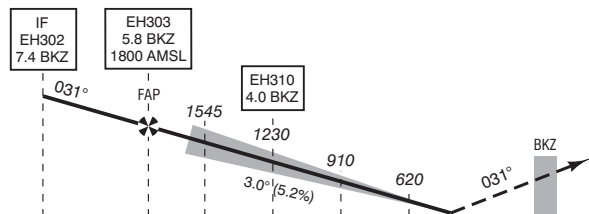
APP 123.980 Beek Approach
TWR 119.480 Beek Tower
119.705
ATIS 124.580 Maastricht Information
121.500 General Emergency
LOC 111.550 BKZ
DME CH52Y BKZ
GP 332.750

NOTES:
1. ATC may deviate from the approaches by radar vectors.
2. ILS must be available.
3. DME required.
4. BKZ reads 1.4 at THR 03.
Altitudes / Speeds:
- During the approaches, descend to or maintain a level as instructed by ATC.
- MAX 250 KIAS below FL 100 unless otherwise instructed.
When cleared for a ABABI 1A or BERIR 1A:
- Descent path at pilot's discretion.
- The MNM altitudes shall be respected.
- The published speeds are mandatory.
- Execute the ILS approach RWY 03.

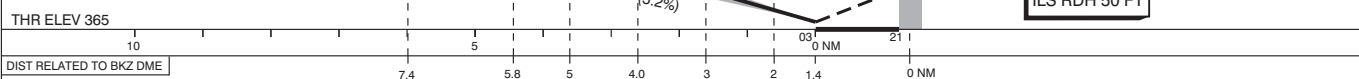


DO NOT DESCEND BELOW THE DESCENT PROFILE

TRANSITION LEVEL BY ATC
TRANSITION ALTITUDE 3000 FT AMSL

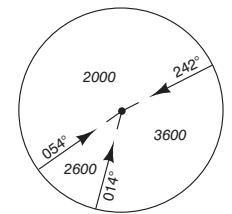


- Missed approach:
- Track 031° MAG and climb to 2000 FT AMSL.
- Inform ATC.
- Missed approach in case of communication failure:
- Track 031° MAG to NW and climb to 3000 FT AMSL;
- Cross NW at 3000 FT AMSL and execute the instrument approach procedure again, as depicted on AD 2.EHBK-IAC-03.1



OCA (OCH) ELEV THR 03: 365.2 FT							
ACFT CAT	CAT I	LOC	CIRCLING	THR 03	505406.7N	0054536.2E	
A	513 (148)	NOT ALLOWED	890 (520)	EH302	504907.9N	0054034.5E	
B	523 (158)		940 (570)	EH303	505027.1N	0054154.3E	
C	533 (168)		1170 (800)	EH310	505157.6N	0054325.7E	
D	543 (178)						
DL	553 (188)						

MSA BASED ON MAS VOR/DME



CEILING AND VISIBILITY MINIMA				DIRECTIONS ARE MAGNETIC DISTANCES IN NM ALTITUDES AND ELEVATIONS IN FEET			
TAKE-OFF	DAY:	NA	NIGHT:	NA			
LANDING	DAY:		NIGHT:				