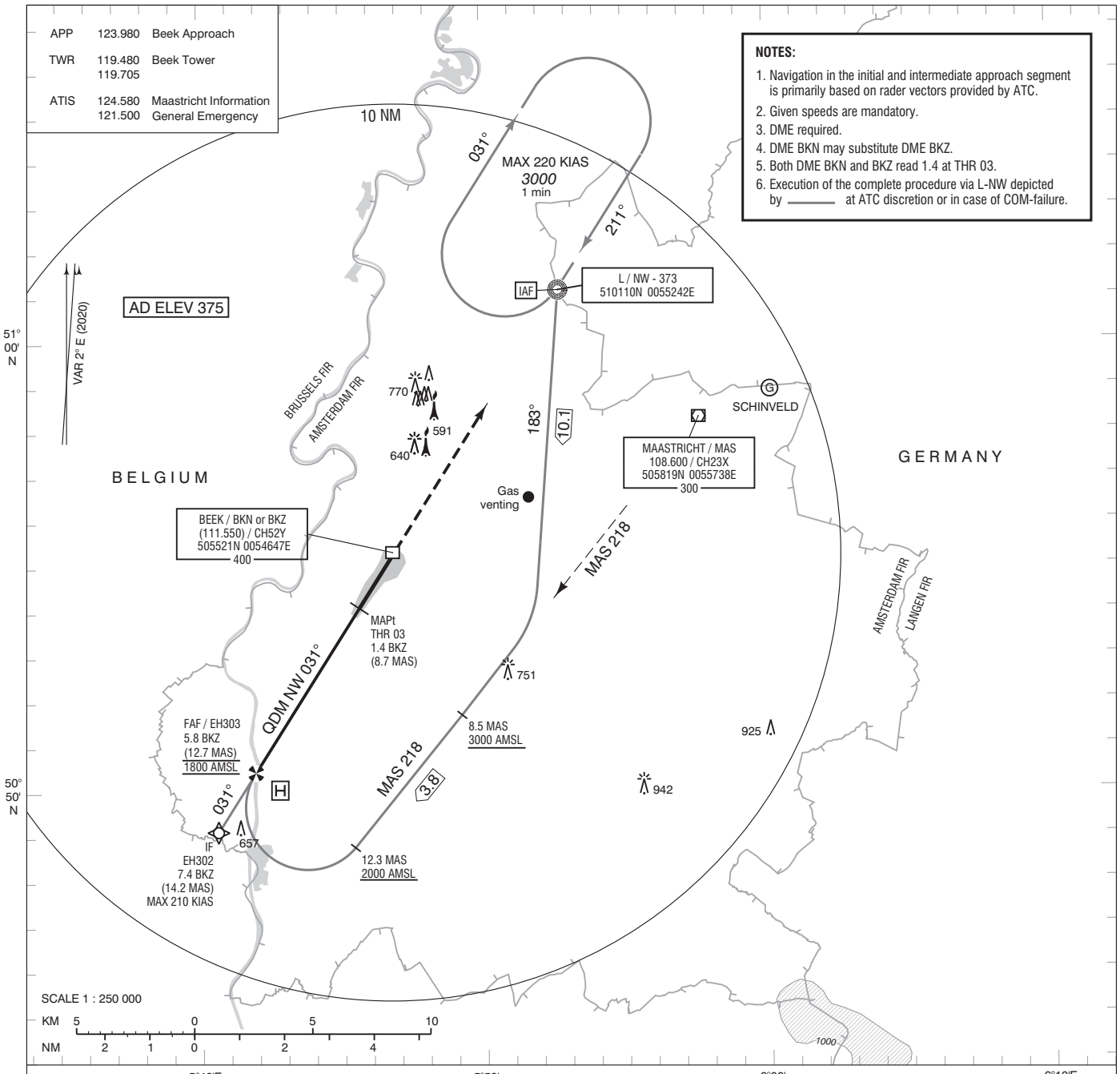


APP 123.980 Beek Approach
TWR 119.480 Beek Tower
119.705
ATIS 124.580 Maastricht Information
121.500 General Emergency

NOTES:
1. Navigation in the initial and intermediate approach segment is primarily based on radar vectors provided by ATC.
2. Given speeds are mandatory.
3. DME required.
4. DME BKN may substitute DME BKZ.
5. Both DME BKN and BKZ read 1.4 at THR 03.
6. Execution of the complete procedure via L-NW depicted by _____ at ATC discretion or in case of COM-failure.

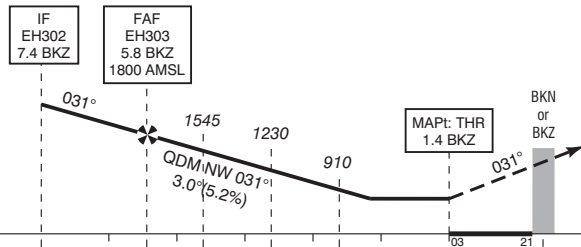


SCALE 1 : 250 000



DO NOT DESCEND BELOW THE DESCENT PROFILE

TRANSITION LEVEL BY ATC
TRANSITION ALTITUDE 3000 FT AMSL



- Missed approach:
- Track 031° MAG and climb to 2000 FT AMSL.
- Inform ATC.
- Missed approach in case of communication failure:
- Track 031° MAG to L-NW and climb to 3000 FT AMSL;
- Cross L-NW at 3000 FT AMSL and execute the instrument approach procedure again.

THR ELEV 365	10	5	5	4.0	3	2	1.4	0 NM
DIST RELATED TO BKN or BKZ DME	7.4	5.8	5	4.0	3	2	1.4	0 NM

GS IN KT	60	80	100	120	140	160	180
VERTICAL SPEED	320 FT/MIN	425 FT/MIN	530 FT/MIN	635 FT/MIN	745 FT/MIN	850 FT/MIN	955 FT/MIN

OCA (OCH) ELEV THR 03: 365.2 FT							
ACFT CAT	NDB MAPt: THR	CIRCLING	THR 03	505406.7N	0054536.2E		
A	830 (460)	890 (520)	EH302	504907.9N	0054034.5E		
B		940 (570)	EH303	505027.1N	0054154.3E		
C		1170 (800)					
D							

CEILING AND VISIBILITY MINIMA			
TAKE-OFF	DAY:	NA	NIGHT:
LANDING	DAY:	NA	NIGHT:

DIRECTIONS ARE MAGNETIC
DISTANCES IN NM
ALTITUDES AND ELEVATIONS
IN FEET

