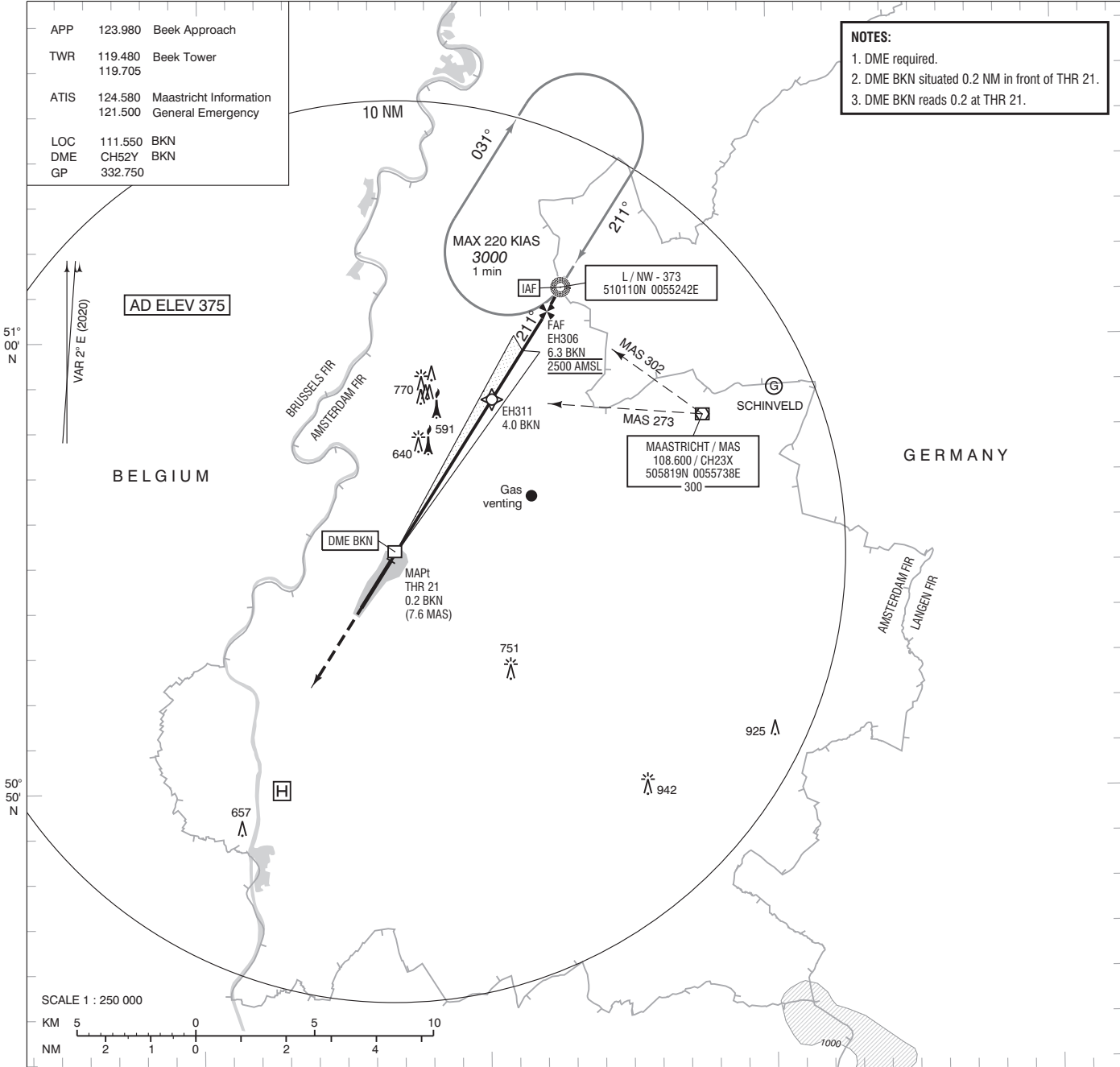


APP 123.980 Beek Approach
TWR 119.480 Beek Tower
119.705
ATIS 124.580 Maastricht Information
121.500 General Emergency
LOC 111.550 BKN
DME CH52Y BKN
GP 332.750

NOTES:
1. DME required.
2. DME BKN situated 0.2 NM in front of THR 21.
3. DME BKN reads 0.2 at THR 18.

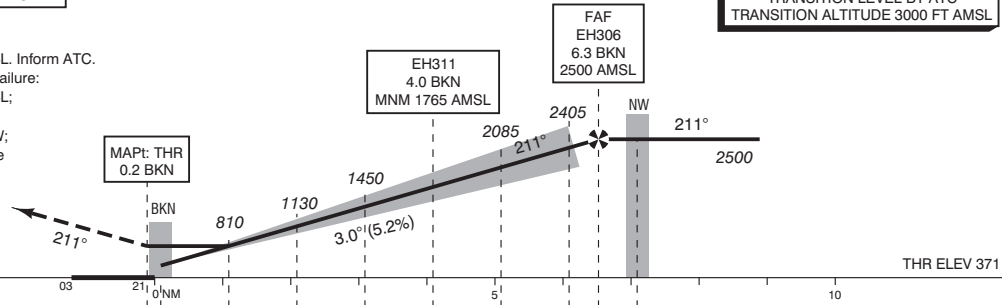


DO NOT DESCEND BELOW THE DESCENT PROFILE

- Missed Approach:
 - Track 211° MAG and climb to 2000 FT AMSL. Inform ATC.
- Missed Approach in case of communication failure:
 - Track 211° MAG and climb to 3000 FT AMSL;
 - At 3.4 BKN turn left track 130° MAG;
 - When passing 2300 FT AMSL turn left to NW;
 - Cross NW at 3000 FT AMSL and execute the instrument approach procedure again.

TRANSITION LEVEL BY ATC
TRANSITION ALTITUDE 3000 FT AMSL

ILS RDH 50 FT

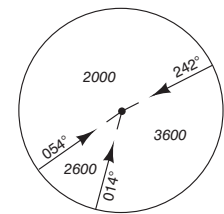


DIST RELATED TO BKN DME	0.2	1	2	3	4.0	5	6	6.3	7
GS IN KT	60	80	100	120	140	160	180		
VERTICAL SPEED	320 FT/MIN	425 FT/MIN	530 FT/MIN	635 FT/MIN	745 FT/MIN	850 FT/MIN	955 FT/MIN		

OCA (OCH) ELEV THR 21: 370.5 FT

ACFT CAT	CAT III supported		LOC MAPt: THR	CIRCLING	THR 21 EH306 EH311	505508.0N 0054638.3E 510037.5N 0055212.9E 505841.3N 0055014.8E
	CAT I	CAT II				
A	522 (151)	(63)	710 (340)	890 (520)		
B	532 (161)	(73)		940 (570)		
C	542 (171)	(89)		1170 (800)		
D	555 (184)	(105)				
DL	558 (187)	(105)				

MSA BASED ON MAS VOR/DME



CEILING AND VISIBILITY MINIMA			
TAKE-OFF	DAY:	NA	NIGHT: NA
LANDING	DAY:	NA	NIGHT: NA

DIRECTIONS ARE MAGNETIC
DISTANCES IN NM
ALTITUDES AND ELEVATIONS
IN FEET