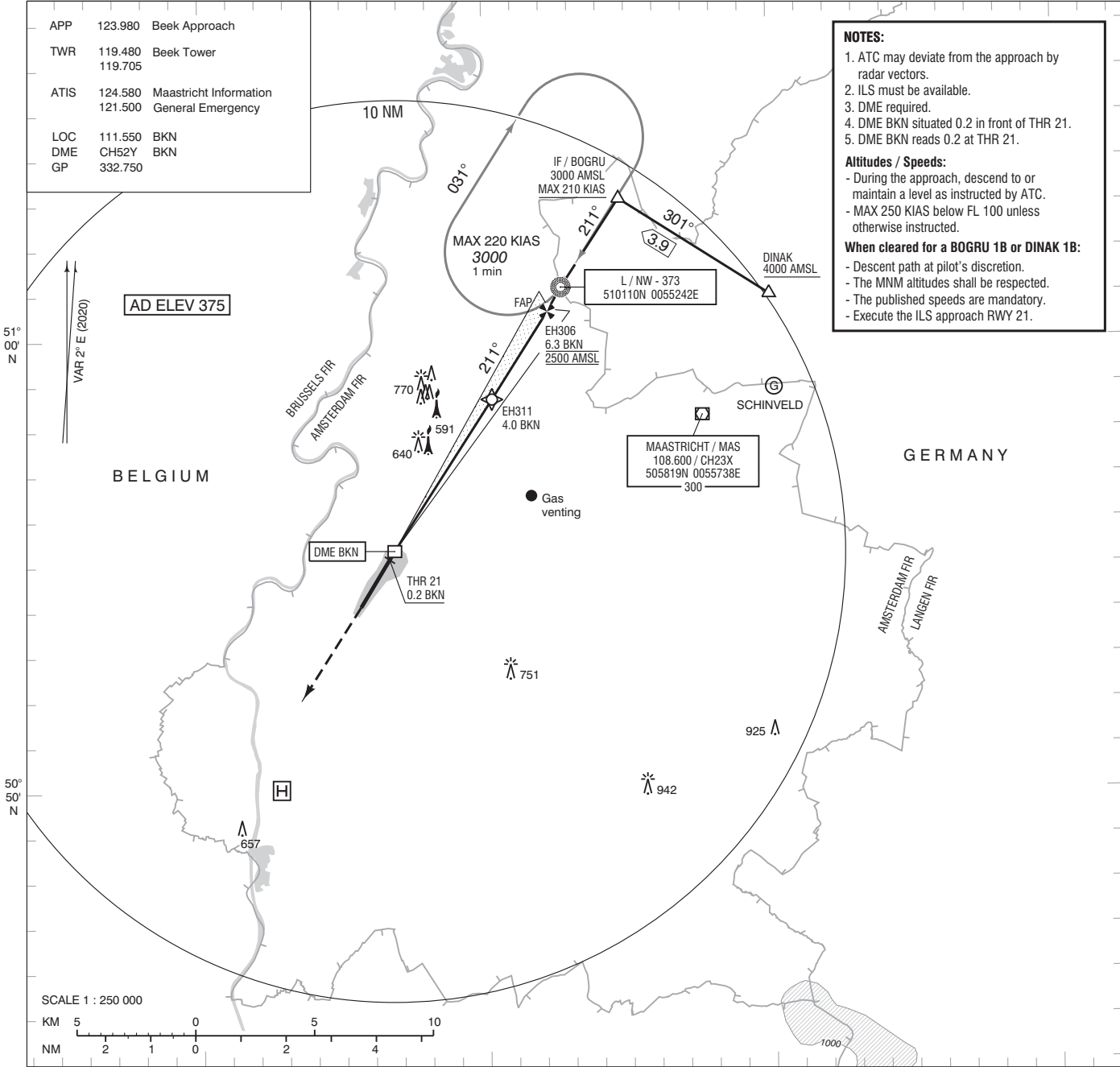


APP 123.980 Beek Approach
 TWR 119.480 Beek Tower
 119.705
 ATIS 124.580 Maastricht Information
 121.500 General Emergency
 LOC 111.550 BKN
 DME CH52Y BKN
 GP 332.750

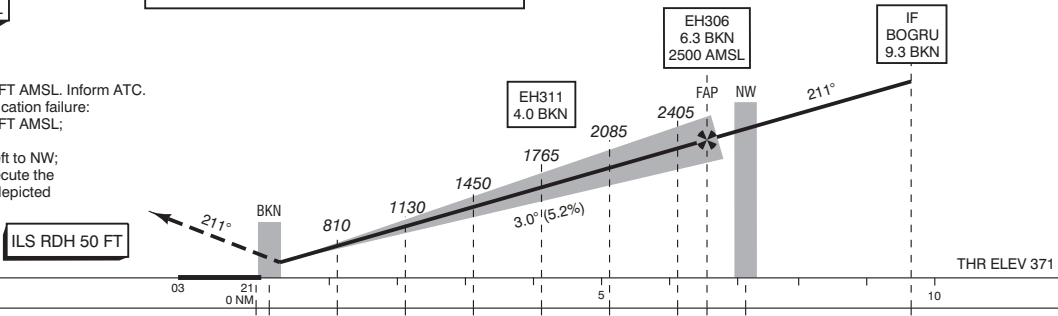
NOTES:
 1. ATC may deviate from the approach by radar vectors.
 2. ILS must be available.
 3. DME required.
 4. DME BKN situated 0.2 in front of THR 21.
 5. DME BKN reads 0.2 at THR 21.
Altitudes / Speeds:
 - During the approach, descend to or maintain a level as instructed by ATC.
 - MAX 250 KIAS below FL 100 unless otherwise instructed.
When cleared for a BOGRU 1B or DINAK 1B:
 - Descent path at pilot's discretion.
 - The MNM altitudes shall be respected.
 - The published speeds are mandatory.
 - Execute the ILS approach RWY 21.



TRANSITION LEVEL BY ATC
 TRANSITION ALTITUDE 3000 FT AMSL

DO NOT DESCEND BELOW THE DESCENT PROFILE

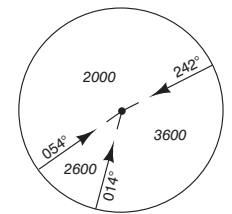
- Missed Approach:
 - Track 211° MAG and climb to 2000 FT AMSL. Inform ATC.
- Missed Approach in case of communication failure:
 - Track 211° MAG and climb to 3000 FT AMSL;
 - At 3.4 BKN turn left track 130° MAG;
 - When passing 2300 FT AMSL turn left to NW;
 - Cross NW at 3000 FT AMSL and execute the instrument approach procedure as depicted on chart AD 2.EHBK-IAC-21.1.



DIST RELATED TO BKN DME	0.2	1	2	3	4.0	5	6.3	7	9.3
GS IN KT	60	80	100	120	140	160	180		
VERTICAL SPEED	320 FT/MIN	425 FT/MIN	530 FT/MIN	635 FT/MIN	745 FT/MIN	850 FT/MIN	955 FT/MIN		

ACFT CAT		CAT III supported		LOC	CIRCLING	THR 21 EH306 EH311	505508.0N 510037.5N 505841.3N	0054638.3E 0055212.9E 0055014.8E
CAT I	CAT II	CAT I	CAT II					
A	522 (151)	(63)		NOT ALLOWED	890 (520)			
B	532 (161)	(73)			940 (570)			
C	542 (171)	(89)			1170 (800)			
D	555 (184)	(105)						
DL	558 (187)	(105)						
CEILING AND VISIBILITY MINIMA								
TAKE-OFF	DAY:	NA			NIGHT:	NA		
LANDING	DAY:	NA			NIGHT:	NA		

MSA BASED ON MAS VOR/DME



DIRECTIONS ARE MAGNETIC
 DISTANCES IN NM
 ALTITUDES AND ELEVATIONS
 IN FEET