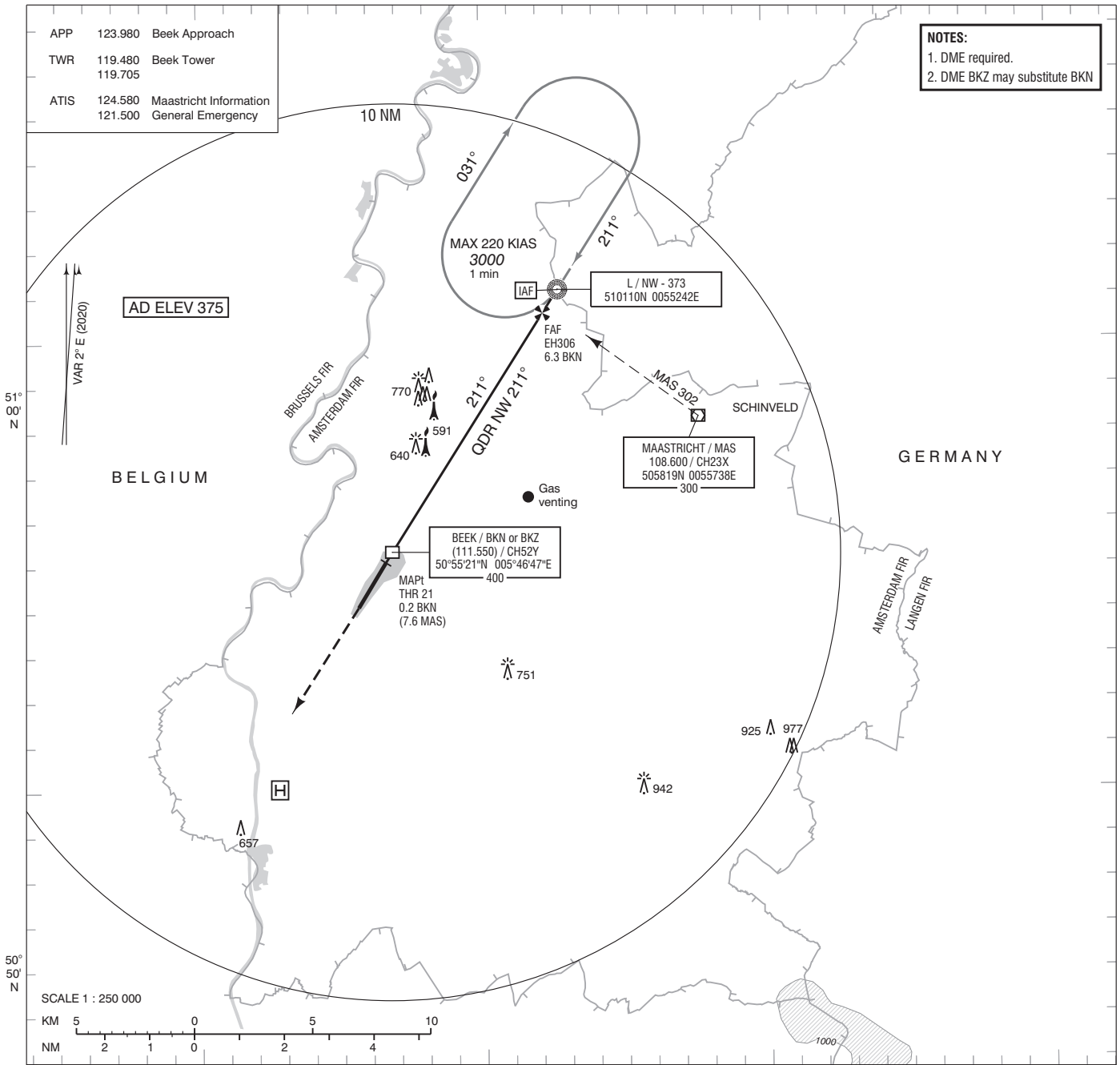


APP 123.980 Beek Approach
TWR 119.480 Beek Tower
119.705
ATIS 124.580 Maastricht Information
121.500 General Emergency

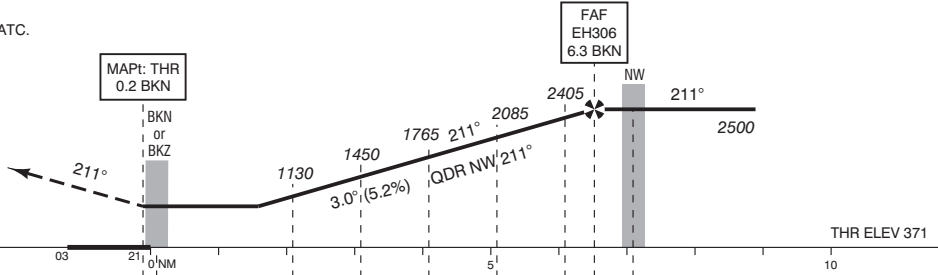
NOTES:
1. DME required.
2. DME BKZ may substitute BKN



DO NOT DESCEND BELOW THE DESCENT PROFILE

TRANSITION LEVEL BY ATC
TRANSITION ALTITUDE 3000 FT AMSL

- Missed Approach:
 - Track 211° MAG and climb to 2000 FT AMSL. Inform ATC.
- Missed Approach in case of communication failure:
 - Track 211° MAG and climb to 3000 FT AMSL;
 - At 3.4 BKN turn left track 130° MAG;
 - When passing 2300 FT AMSL turn left to NW;
 - Cross NW at 3000 FT AMSL and execute the instrument approach procedure again.



DIST RELATED TO BKN or BKZ DME							
GS IN KT	60	80	100	120	140	160	180
VERTICAL SPEED	320 FT/MIN	425 FT/MIN	530 FT/MIN	635 FT/MIN	745 FT/MIN	850 FT/MIN	955 FT/MIN

OCA (OCH) ELEV THR 21: 370.5 FT				MSA BASED ON MAS VOR/DME			
ACFT CAT	NDB MAPT : THR	CIRCLING	THR 21 505508.0N 0054638.3E EH306 510037.5N 0055212.9E				
A	900 (530)	900 (530)					
B		940 (570)					
C		1170 (800)					
D							
CEILING AND VISIBILITY MINIMA				DIRECTIONS ARE MAGNETIC DISTANCES IN NM ALTITUDES AND ELEVATIONS IN FEET			
TAKE-OFF	DAY:	NA	NIGHT:	NA			
LANDING	DAY:	NA	NIGHT:	NA			