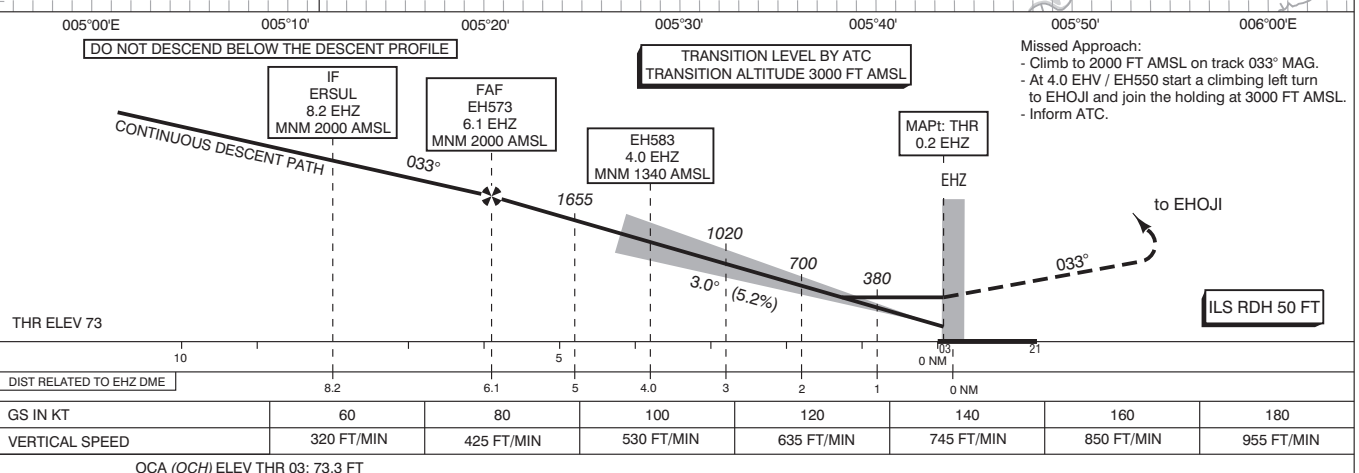
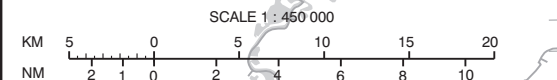


APP	123.180	RAPCON South
	124.530	Eindhoven Arrival
TWR	131.005	Eindhoven Tower
	122.100	
GND	121.930	Eindhoven Ground
	121.500	General Emergency
ATIS	126.030	Eindhoven Information
LOC	109.750	EHZ
DME	CH34Y	EHZ
GP	333.050	

NOTES:
 1. Continuous descent operation.
 2. GNSS required.
 3. LOC as MNM must be available.
 4. DME required.
 5. Given EH waypoints beyond the FAF must be considered to be supplementary information.

Altitudes / Speeds:
 When cleared for IPTAS / OKLOV / RUMER / SOPVI approach RWY 03:
 - Continue to ERSUL via the approach.
 - Switch to QNH at EH582 / SOMEM.
 - Establish a continuous descent path.
 - The MNM altitudes shall be respected.
 - Execute the ILS or LOC approach RWY 03.



DIST RELATED TO EHZ DME		8.2	6.1	5	4.0	3	2	1	0 NM	03	21
GS IN KT		60	80	100	120	140	160	180			
VERTICAL SPEED		320 FT/MIN	425 FT/MIN	530 FT/MIN	635 FT/MIN	745 FT/MIN	850 FT/MIN	955 FT/MIN			
OCA (OCH) ELEV THR 03: 73.3 FT											
ACFT CAT	CAT I	LOC MAPt: THR	CIRCLING	THR 03	512627.1N 0052150.9E	EH587	511904.4N 0054157.0E	MSA BASED ON ARP 1800			
A	239 (165)	420 (346)	NOT ALLOWED	EH550	513012.4N 0052603.7E	EH588	511810.0N 0052624.1E				
B	249 (175)			EH573	512137.8N 0051627.5E	EH589	513016.1N 0055348.7E				
C	259 (185)			EH582	513719.3N 0051209.3E	EH590	513535.5N 0055220.5E				
D	269 (195)			EH583	512320.0N 0051821.6E	EH595	513040.6N 0051015.7E				
CEILING AND VISIBILITY MINIMA				DIRECTIONS ARE MAGNETIC DISTANCES IN NM ALTITUDES AND ELEVATIONS IN FEET							
TAKE-OFF	DAY:	NA	NIGHT:	NA							
LANDING	DAY:		NIGHT:								