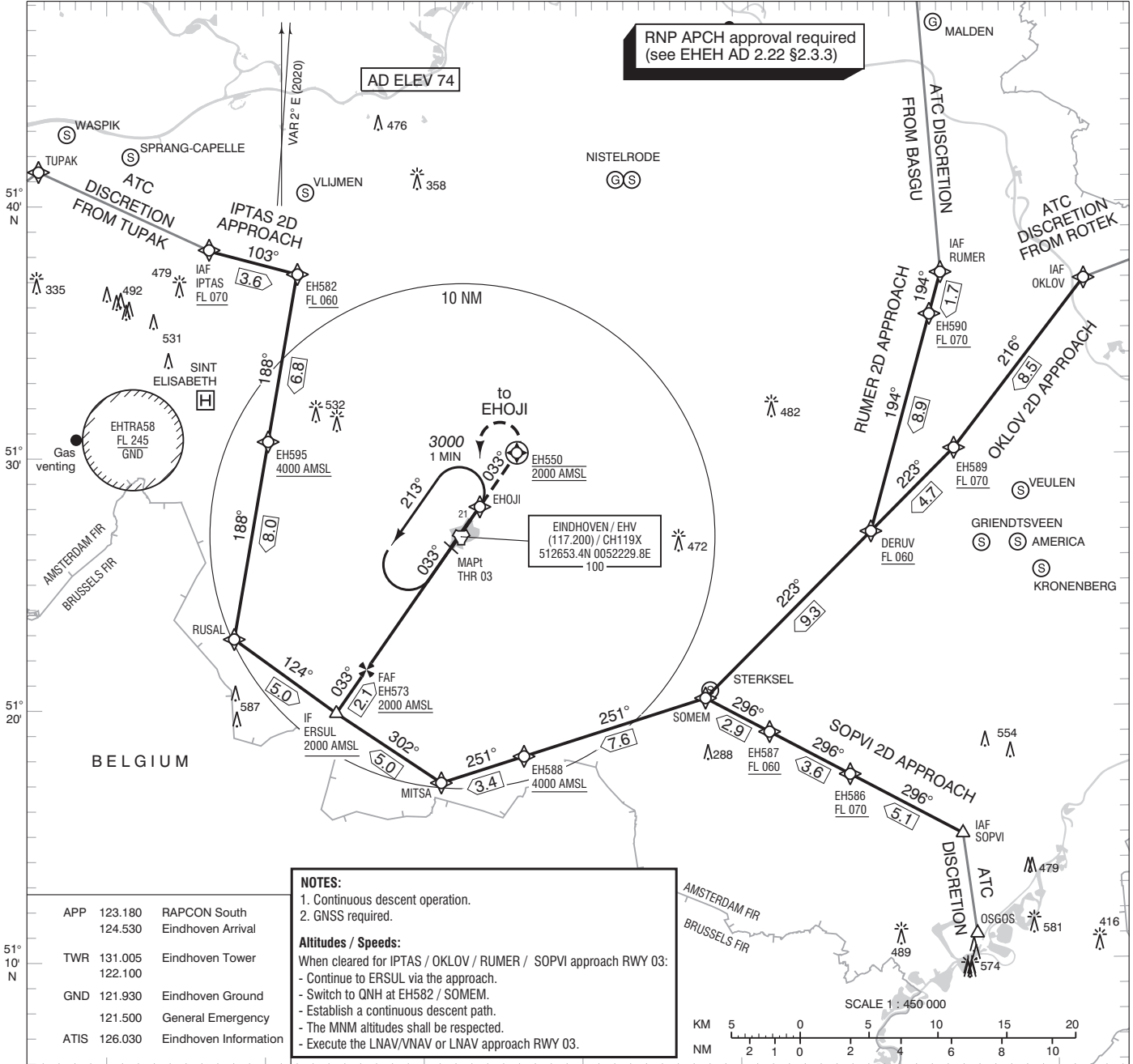
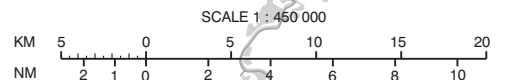


RNP APCH approval required (see EHEH AD 2.22 §2.3.3)



APP	123.180	RAPCON South
	124.530	Eindhoven Arrival
TWR	131.005	Eindhoven Tower
	122.100	
GND	121.930	Eindhoven Ground
	121.500	General Emergency
ATIS	126.030	Eindhoven Information

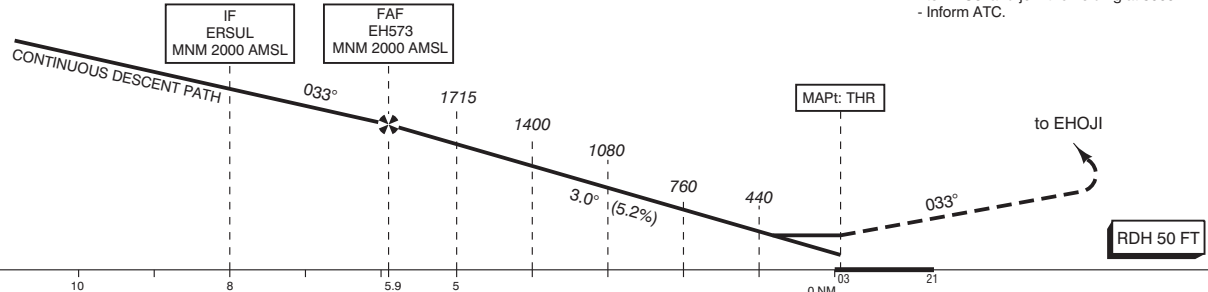
**NOTES:**  
 1. Continuous descent operation.  
 2. GNSS required.  
**Altitudes / Speeds:**  
 When cleared for IPTAS / OKLOV / RUMER / SOPVI approach RWY 03:  
 - Continue to ERSUL via the approach.  
 - Switch to QNH at EH582 / SOMEM.  
 - Establish a continuous descent path.  
 - The MNM altitudes shall be respected.  
 - Execute the LNAV/VNAV or LNAV approach RWY 03.



DO NOT DESCEND BELOW THE DESCENT PROFILE

TRANSITION LEVEL BY ATC  
 TRANSITION ALTITUDE 3000 FT AMSL

Missed Approach:  
 - Climb to 2000 FT AMSL on track 033° MAG.  
 - EH550 start a climbing left turn to EHOJI and join the holding at 3000 FT AMSL.  
 - Inform ATC.



GS IN KT	60	80	100	120	140	160	180	
VERTICAL SPEED	320 FT/MIN	425 FT/MIN	530 FT/MIN	635 FT/MIN	745 FT/MIN	850 FT/MIN	955 FT/MIN	
OCA (OCH) ELEV THR 03: 73.3 FT								
ACFT CAT	LNAV/VNAV MNM TEMP -20°C	LNAV MAP: THR	CIRCLING	THR 03 512627.1N 0052150.9E EH550 513012.4N 0052603.7E EH573 512137.8N 0051627.5E EH582 513719.3N 0051209.3E EH586 511722.2N 0054701.4E EH587 511904.4N 0054157.0E			EH588 511810.0N 0052624.1E EH589 513016.1N 0055348.7E EH590 513535.5N 0055220.5E EH595 513040.6N 0051015.7E	
A	324 (250)	420 (350)	NOT ALLOWED	MSA BASED ON ARP 1800				
B								
C								
D	333 (259)							
CEILING AND VISIBILITY MINIMA				DIRECTIONS ARE MAGNETIC DISTANCES IN NM ALTITUDES AND ELEVATIONS IN FEET				
TAKE-OFF	DAY: NA	NIGHT: NA						
LANDING	DAY: NA	NIGHT: NA						