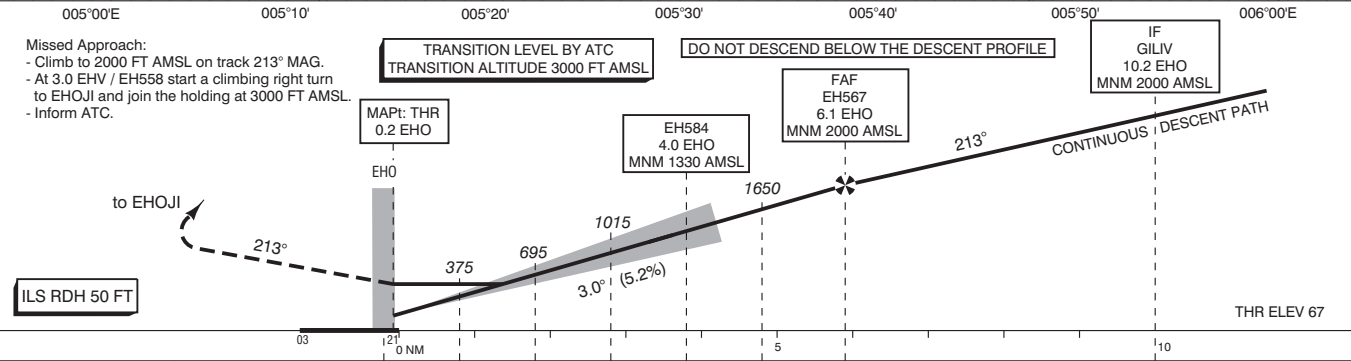


NOTES:
 1. Continuous descent operation.
 2. GNSS required.
 3. LOC as MNM must be available.
 4. DME required.
 5. Given EH waypoints beyond the FAF must be considered to be supplementary information.
Altitudes / Speeds:
 When cleared for IPTAS/ OKLOV / RUMER / SOPVI approach RWY 21:
 - Continue to GILIV via the approach.
 - Switch to QNH at EH594 / VENAV / DERUV.
 - Establish a continuous descent path.
 - The MNM altitudes shall be respected.
 - Execute the ILS or LOC approach RWY 21.

APP 123.180	RAPCON South
124.530	Eindhoven Arrival
TWR 131.005	Eindhoven Tower
122.100	
GND 121.930	Eindhoven Ground
121.500	General Emergency
ATIS 126.030	Eindhoven Information
LOC 109.750	EHO
DME CH34Y	EHO
GP 333.050	



DIST RELATED TO EHO DME	0 NM	1	2	3	4.0	5	6.1	10	10.2
GS IN KT	60	80	100	120	140	160	180		
VERTICAL SPEED	320 FT/MIN	425 FT/MIN	530 FT/MIN	635 FT/MIN	745 FT/MIN	850 FT/MIN	955 FT/MIN		

OCA (OCH) ELEV THR 21: 66.6 FT				THR 21 512733.8N 0052305.6E EH558 512428.9N 0051938.6E EH567 513223.9N 0052831.6E EH582 513719.3N 0051209.3E EH584 513041.2N 0052635.9E EH585 512028.2N 0055133.1E EH589 513016.1N 0055348.7E EH591 513611.7N 0055123.1E EH594 513712.4N 0052041.6E EH596 513038.4N 0054223.6E	MSA BASED ON ARP 1800
ACFT CAT	CAT I	LOC MAPT: THR	CIRCLING		
A	227 (160)	500 (433)	NOT ALLOWED		
B	236 (169)				
C	246 (179)				
D	256 (189)				
CEILING AND VISIBILITY MINIMA				DIRECTIONS ARE MAGNETIC DISTANCES IN NM ALTITUDES AND ELEVATIONS IN FEET	
TAKE-OFF	DAY: NA	NIGHT:	NA		
LANDING	DAY:	NIGHT:			