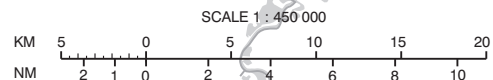


APP	123.180	RAPCON South
	124.530	Eindhoven Arrival
TWR	131.005	Eindhoven Tower
	122.100	
GND	121.930	Eindhoven Ground
	121.500	General Emergency
ATIS	126.030	Eindhoven Information

NOTES:
 1. Continuous descent operation.
 2. GNS5 required.

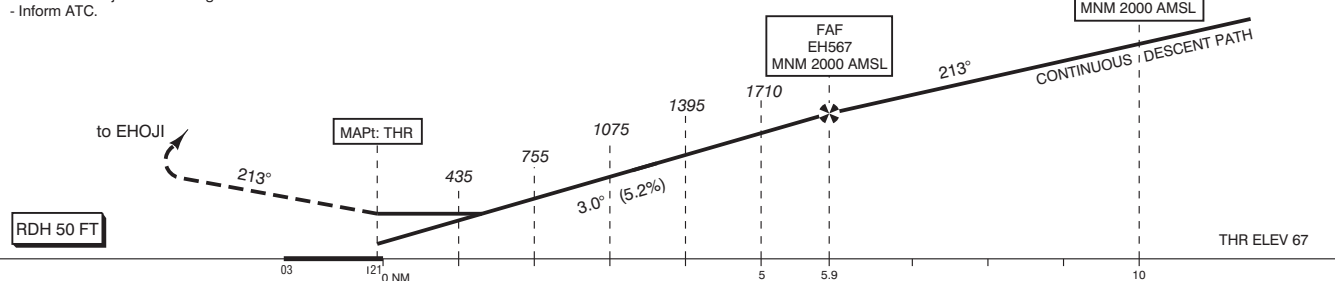
Altitudes / Speeds:
 When cleared for IPTAS / OKLOV / RUMER / SOPVI approach RWY 21:
 - Continue to GILIV via the approach.
 - Switch to QNH at EH594 / VENAV / DERUV.
 - Establish a continuous descent path.
 - The MNM altitudes shall be respected.
 - Execute the LNAV/VNAV or LNAV approach RWY 21.



Missed Approach:
 - Climb to 2000 FT AMSL on track 213° MAG.
 - EH558 start a climbing right turn to EHOJI and join the holding at 3000 FT AMSL.
 - Inform ATC.

TRANSITION LEVEL BY ATC
 TRANSITION ALTITUDE 3000 FT AMSL

DO NOT DESCEND BELOW THE DESCENT PROFILE



GS IN KT	60	80	100	120	140	160	180
VERTICAL SPEED	320 FT/MIN	425 FT/MIN	530 FT/MIN	635 FT/MIN	745 FT/MIN	850 FT/MIN	955 FT/MIN

OCA (OCH) ELEV THR 21: 66.6 FT				THR 21 512733.8N 0052305.6E EH558 512428.9N 0051938.6E EH567 513223.9N 0052831.6E EH582 513719.3N 0051209.3E EH585 512028.2N 0055133.1E EH589 513016.1N 0055348.7E EH591 513611.7N 0055123.1E EH594 513712.4N 0052041.6E EH596 513038.4N 0054223.6E	MSA BASED ON ARP 1800
ACFT CAT	LNAV/VNAV MNM TEMP -20°C	LNAV MAPt: THR	CIRCLING		
A	334 (267)	450 (390)	NOT ALLOWED		
B	344 (277)				
C	354 (287)				
D	364 (297)				
CEILING AND VISIBILITY MINIMA				DIRECTIONS ARE MAGNETIC DISTANCES IN NM ALTITUDES AND ELEVATIONS IN FEET	
TAKE-OFF	DAY: NA	NIGHT:	NA		
LANDING	DAY:	NIGHT:			