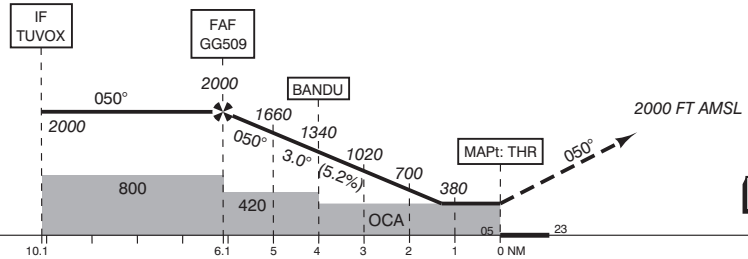


- Missed Approach:
 - Track 050° MAG and climb to 2000 FT AMSL. Inform ATC.
- Missed Approach in case of communication failure:
 - Track 050° MAG and climb to 3000 FT AMSL;
 - When reaching 3000 FT AMSL turn left to intercept EEL 229 and proceed to OMFAR;
 - After arriving over OMFAR hold or descend to 2000 FT AMSL in an outbound turn, intercept final approach and execute the instrument approach procedure again.

TRANSITION LEVEL BY ATC
TRANSITION ALTITUDE 3000 FT AMSL

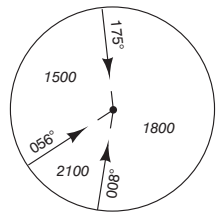


GS IN KT	60	80	100	120	140	160	180
VERTICAL SPEED	320 FT/MIN	425 FT/MIN	530 FT/MIN	635 FT/MIN	745 FT/MIN	850 FT/MIN	955 FT/MIN

OCA (OCH) ELEV THR 05: 13.3 FT

MSA BASED ON EEL VOR/DME

ACFT CAT	LPV	LNAV/VNAV MNM TEMP -15°C	LNAV	CIRCLING*	THR 05 530639.9N 0063339.2E	GG509 530254.5N 0062543.8E	GG751 531421.5N 0065000.6E
A	313 (300)	320 (307)	440 (422)	450 (432)			
B	313 (300)	320 (307)		520 (502)			
C	313 (300)	320 (307)		620 (602)			
D	313 (300)	320 (307)		850 (832)			
CEILING AND VISIBILITY MINIMA					* Circling approaches shall be executed south-east of the AD, unless otherwise instructed by ATC.		
TAKE-OFF	DAY: NA	NIGHT: NA			DIRECTIONS ARE MAGNETIC DISTANCES IN NM ALTITUDES AND ELEVATIONS IN FEET		
LANDING	DAY: NA	NIGHT: NA					



CHANGE: obstacles added; MNM ALT; editorial.