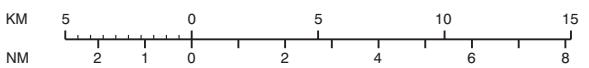


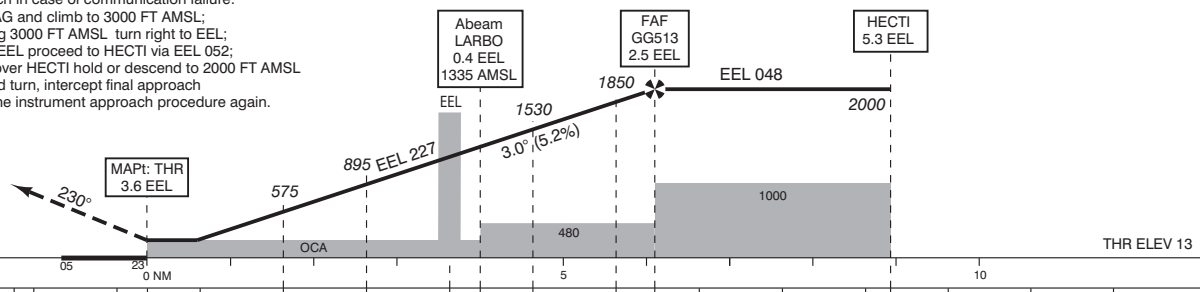
NOTES:
1. DME required.

APP 120.305 Eelde Approach
TWR 118.705 Eelde Tower
119.705
ATIS 133.555 Eelde Information
121.500 General Emergency



- Missed approach:
- Track 230° MAG and climb to 2000 FT AMSL. Inform ATC.
- Missed approach in case of communication failure:
- Track 230° MAG and climb to 3000 FT AMSL;
- When reaching 3000 FT AMSL turn right to EEL;
- After passing EEL proceed to HECTI via EEL 052;
- After arriving over HECTI hold or descend to 2000 FT AMSL in an outbound turn, intercept final approach and execute the instrument approach procedure again.

TRANSITION LEVEL BY ATC
TRANSITION ALTITUDE 3000 FT AMSL



DIST RELATED TO EEL DME 5 3.6 2 1 0 NM 0.4 1 2 2.5 5 5.3 10 8

GS IN KT	60	80	100	120	140	160	180
VERTICAL SPEED	320 FT/MIN	425 FT/MIN	530 FT/MIN	635 FT/MIN	745 FT/MIN	850 FT/MIN	955 FT/MIN

ACFT CAT			VOR MAPt: THR	CIRCLING*	* Circling approaches shall be executed south-east of the AD, unless otherwise instructed by ATC.	THR 23 530729.8N 0063525.0E GG513 531125.6N 0064307.9E	MSA BASED ON EEL VOR/DME
A	460 (442)	460 (442)					
B		520 (502)					
C		620 (602)					
D		850 (832)					

CEILING AND VISIBILITY MINIMA				BEARINGS ARE MAGNETIC DISTANCES IN NM ALTITUDES AND ELEVATIONS IN FEET			
TAKE-OFF	DAY:	NA	NIGHT:	NA			
LANDING	DAY:	NA	NIGHT:	NA			