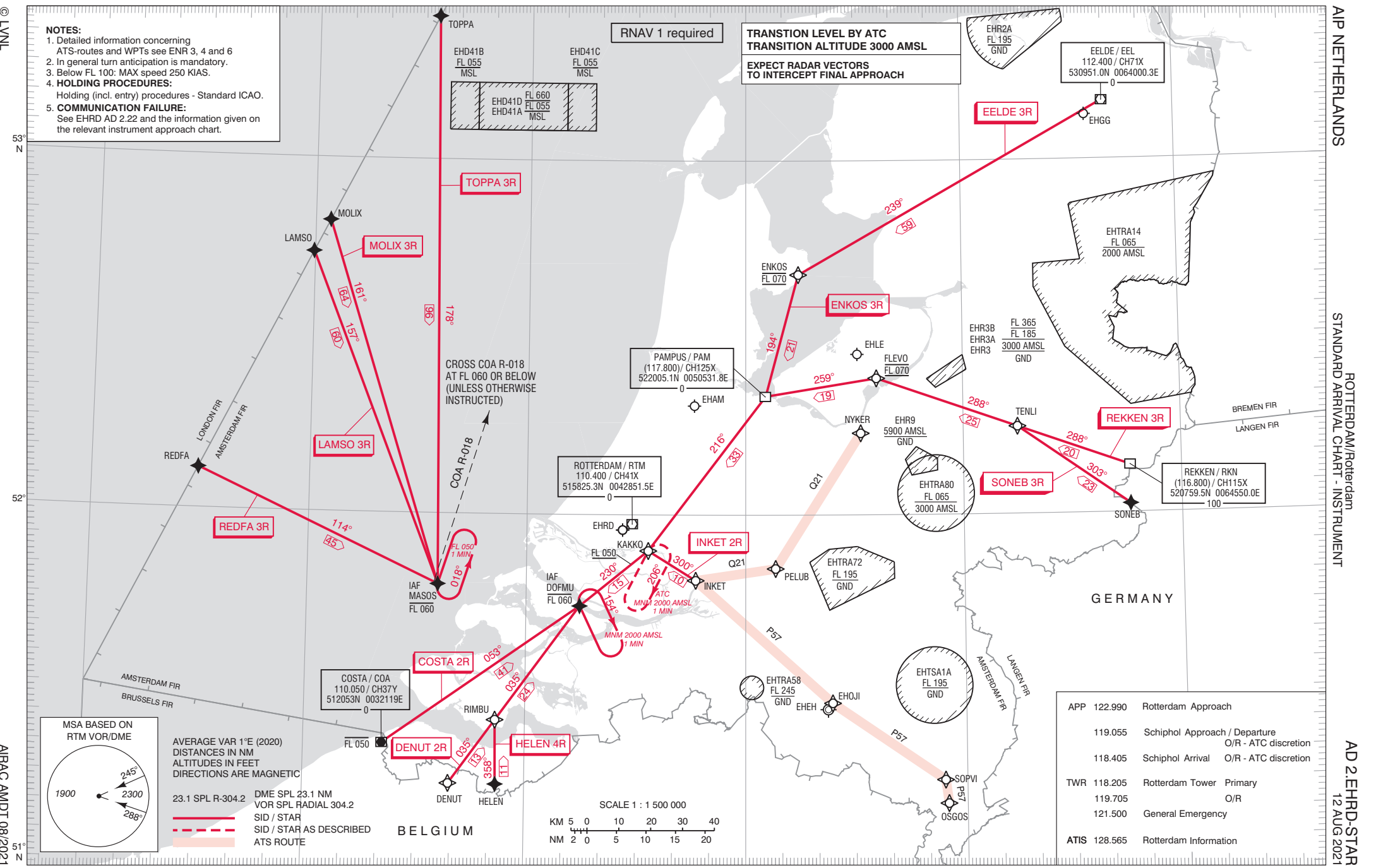


**NOTES:**  
 1. Detailed information concerning ATS-routes and WPTs see ENR 3, 4 and 6  
 2. In general turn anticipation is mandatory.  
 3. Below FL 100: MAX speed 250 KIAS.  
 4. **HOLDING PROCEDURES:**  
 Holding (incl. entry) procedures - Standard ICAO.  
 5. **COMMUNICATION FAILURE:**  
 See EHRD AD 2.22 and the information given on the relevant instrument approach chart.

RNAV 1 required

**TRANSITION LEVEL BY ATC**  
**TRANSITION ALTITUDE 3000 AMSL**  
 EXPECT RADAR VECTORS TO INTERCEPT FINAL APPROACH



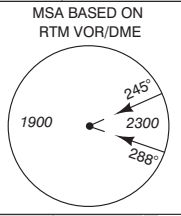
CROSS COA R-018 AT FL 060 OR BELOW (UNLESS OTHERWISE INSTRUCTED)

PAMPUS / PAM  
 (117.800) / CH125X  
 522005.1N 0050531.8E

ROTTERDAM / RTM  
 110.400 / CH41X  
 515825.3N 0042851.5E

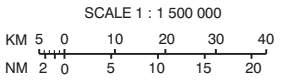
REKKEN / RKN  
 (116.800) / CH115X  
 520759.5N 0064550.0E  
 100

COSTA / COA  
 110.050 / CH37Y  
 512053N 0032119E



AVERAGE VAR 1°E (2020)  
 DISTANCES IN NM  
 ALTITUDES IN FEET  
 DIRECTIONS ARE MAGNETIC

23.1 SPL R-304.2  
 DME SPL 23.1 NM  
 VOR SPL RADIAL 304.2  
 --- SID / STAR  
 - - - SID / STAR AS DESCRIBED  
 --- ATS ROUTE



APP 122.990	Rotterdam Approach
119.055	Schiphol Approach / Departure O/R - ATC discretion
118.405	Schiphol Arrival O/R - ATC discretion
TWR 118.205	Rotterdam Tower Primary
119.705	O/R
121.500	General Emergency
ATIS 128.565	Rotterdam Information